



# Mackworth Universal Sling

## Sling Fitting Guide

[www.easycare systems.co.uk](http://www.easycare systems.co.uk)

## Table of Contents

Product Overview .....	3
Universal Sling Generic Design.....	3
Patient Measuring.....	4
Sling Sizes .....	4
Material Types .....	4
Carry Bar Attachment .....	6
Sling Fitting.....	7
Sling Checks.....	8
Further Information .....	8

## Product Overview

The **sling range** is used by carers and health care professionals to assist in the lifting and transferring of patients whilst also satisfying the professional and home care environments.

The sling is designed to provide a patient handling and moving solution within a healthcare setting. The sling range is designed to support a patient when used in conjunction with a hoist. It has the ability to safely and securely raise an individual up from one location such as a bed, move the individual and then be easily removed or left in location once the patient is in the desired location.

The sling range will be used in conjunction with a hoist (either ceiling track or mobile) and will also interact with the environment eg bed and/or chair. The specific size and type of sling will be selected for each task based on a couple of user and environmental factors:

- Size and weight of the patient
- Other medical conditions of the patient
- The nature of the task to be completed
- If the sling is to be left in situ after the manoeuvre

The sling is the component that provides the fit around the patient and ensures a safe and secure lift. Due to this there needs to be consideration of the weight and size of the patient to ensure a safe manoeuvre. The sling attaches to a hoist through the use of a carry bar. There are two types of connectors – hook and clip. Slings need to be manufactured to the correct specification to meet the need of the carry bar.

## Universal Sling Generic Design

It is often the sling of choice as it is an extremely versatile sling that can be used for a wide range of patient transfers including chair, wheelchair, bath and bed.

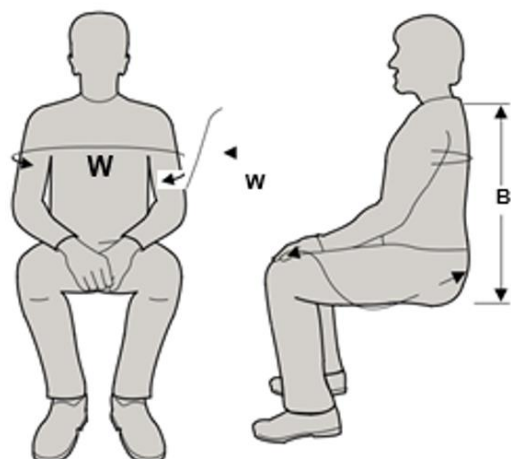
This sling maximises support whilst giving as much access as possible, providing the patient with a degree of dignity during fitting and whilst being manoeuvred.

The Universal Sling is available in different materials, each providing a number of different benefits to the user.



Provides support to legs and shoulders with an aperture allowing removal to be easier once the patient is in a seating position

## Patient Measuring



**W:** Humorous bone – outer most post (left to right)



**B:** Coccyx to base of neck



## Sling Sizes

Sling sizes are identified through the colour of the ribbon edging. The colour and size is identified below.

Size	Col	Sling Width	User Width Range		Sling Back	User Back Range	
			(Minimum)	(Maximum)		(Minimum)	(Maximum)
XX Small	Purple	660	420	488	440	410	470
X Small	Brown	760	483	562	490	460	520
Small	Red	860	547	636	515	475	555
Medium	Yellow	970	617	717	540	490	590
Large	Cyan	1060	674	783	635	585	685
X Large	Dark Blue	1120	712	828	660	610	710
XX Large	Pink	1200	763	887	660	610	710

## Material Types

The various materials provide various benefits to the patient, the material options are:

- Polyester Solid (Grey)
- Polyester Mesh (Grey)
- Parasilk (Aquamarine Blue)
- Quilted (Grey)
- Supersoft Spacer (Black)
- Single Use Material
- Patient Specific Material

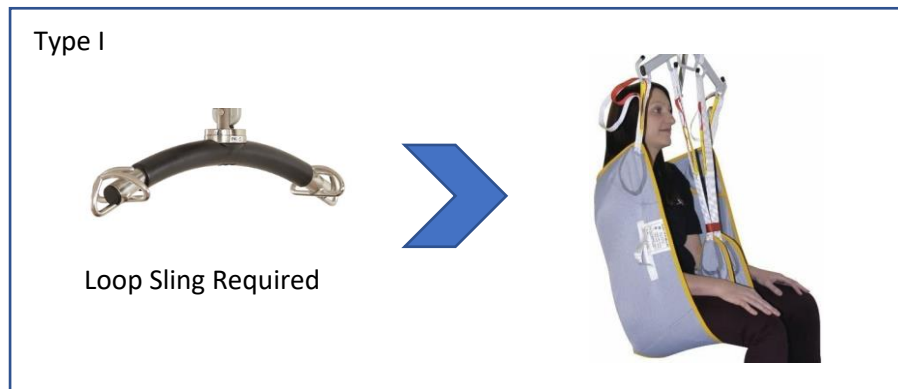
Material specifications and benefits are summarised below:

Material	Benefits
Polyester Solid (Grey)	<p>The material is quick to dry and is able to be submerged in water along with being extremely tough, lightweight and flexible, reducing shock while loading.</p> <p>The high-quality polyester webbing material allows for these slings to be used time and time again, giving you outstanding value for money.</p>
Polyester Mesh (Grey)	<p>The mesh version of the polyester material adds an additional benefit of assisting in body temperature regulation and provides some breathability. As with the solid polyester material is quick to dry and is able to be submerged in water along with being extremely tough, lightweight and flexible, reducing shock while loading.</p> <p>The high-quality polyester webbing material allows for these slings to be used time and time again, giving you outstanding value for money.</p>
Parasilk (Aquamarine Blue)	<p>Parasilk fabric is a fine and soft material, allowing the sling to slide smoothly under the patient. This soft fabric also prevents pressure areas, making it suitable for patients with sensitive skin conditions.</p>
Quilted (Grey)	<p>A padded and quilted polyester fabric which enhances patient comfort.</p>
Supersoft Spacer (Black)	<p>A “supersoft” breathable, stretch capable fabric, which is also padded for comfort during longer periods of transfer and reducing the risk of skin conditions.</p>
Single Use Material	<p>An economical, disposable, single patient use material. Cannot be laundered. Can be used multiple times by the same patient but once the material becomes soiled then it requires disposal. It saves on the laundering process of the sling. This disposable material is ideal for short term use and assist in infection control.</p>
Patient Specific Material	<p>An economical material that can be washed up to 20 times. This is a white sanforised, cotton that can be laundered at 85°C. This semi disposable material can assist in a medium term use and assist in infection control.</p>

## Carry Bar Attachment

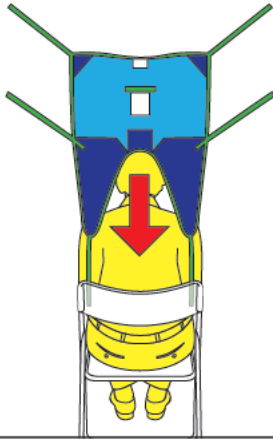
The sling attaches to a hoist through the use of a carry bar. There are two types of connectors – hook and clip. Slings need to be manufactured to the correct specification to meet the need of the carry bar.

Refer to 'The General User Safety Guide: Patient Slings' for instructions how to safely and correctly attach the sling to the carry bar.

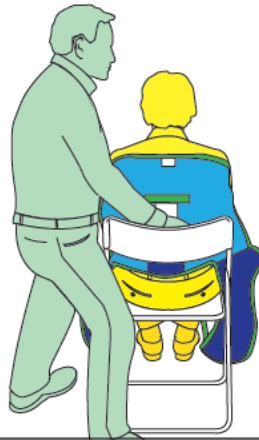


## Sling Fitting

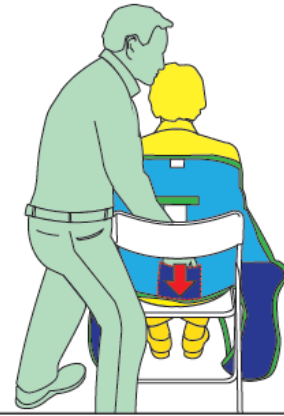
- 1** Ensure that the guiding handles and identification label are on the outside.



- 2** The Sling should be centred and aligned with the user's back.



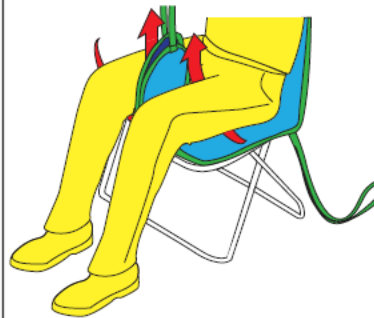
- 3** Place the sling down the back of the client using the rear pocket. Ensure the aperture is tucked under the client's coccyx.



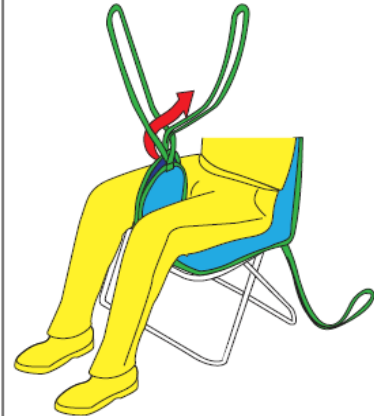
- 4** Straighten the leg section. Push the side of the aperture underneath the client's hip. Repeat on the opposite side. Kneeling in front of the client, pull each leg towards you in turn until all of the slack is taken up.



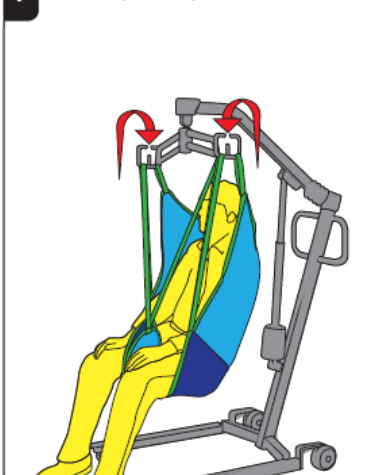
- 5** Carefully feed the legs of the sling underneath pushing the sling section down into the seating surface to avoid friction and shear against the clients legs.



- 6** Ensure the leg sections are equal in length and no twists or kinks are present. Feed one leg strap through the other.



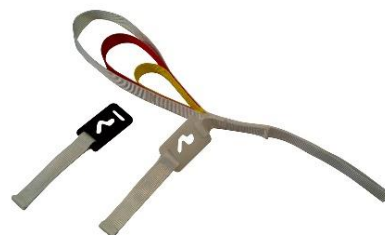
- 7** Attach straps to the spreader bar.



## Sling Checks



**Sling Loops** – Check the condition and integrity (if relevant)



**Sling Clips** – Check the condition and integrity (if relevant)



**Clips** – Check the condition and integrity



**Fabric and Seams** – Check the condition and integrity

Equipment safety checks for slings prior to each use, need to ensure that:

- The sling is the correct size and type for the patient and is fit for purpose
- The sling and hoist are compatible
- All labels are legible and show the SWL (safe working load) and unique identifier and size
- There are no signs of fraying, tears or deterioration
- All fabric and stitching is present and intact
- The Velcro (if applicable) is clean and free of fibres/fluff etc.
- The loops/clips have no obvious signs of damage/fraying etc.
- It has been cleaned.

## Contact Us

Units 5 and 6 Lower Vicarage  
Road  
Southampton  
Hampshire  
SO19 7RJ  
T: 02380 420678  
E: [info@easycare systems.co.uk](mailto:info@easycare systems.co.uk)

**easy**care  
systems

Special Products and Service