

# Uni-fix Raised Toilet Seat

easyCare  
systems

**Maximum safe user weight: 200kg (31 stones)**

The Raised Toilet Seat can be fitted directly on to a toilet bowl to increase the height by 75mm (3"). Alternatively it can be fixed onto the existing seat for an increased height of approx. 100mm (4").

## Fitting

1. Push the seat onto the toilet bowl from the front. The adjustment knob should be at the rear and the bottom rim of the seat overhangs the bowl.
2. Turn the adjustment knob clockwise until tight. Ensure both rubber feet (\*) are in contact with the side of the bowl.

If extra height is required, the raised toilet seat can be fitted on top of the standard toilet seat.

To remove the seat, turn the adjustment knob anti-clockwise until the seat is loose.

## Cleaning

The Raised Toilet Seat may be cleaned by steam autoclave or by hand using non-abrasive cleaners suitable for use with plastic baths.

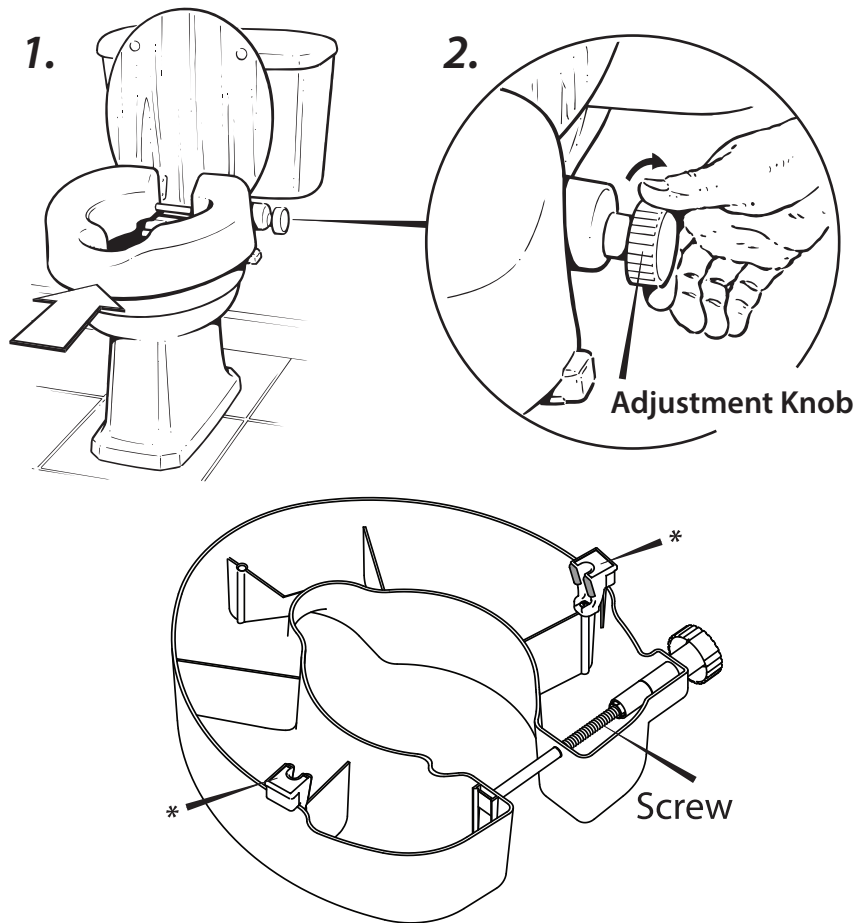
## Warranty

This product is warranted to specification for 3 years.

## Essential Aids for Living

The Uni-fix Raised Toilet Seat is just one product in a range of Daily Living Aids designed to make life more comfortable, restore independence and maintain dignity.

To receive further information please contact us at the address below.



### **IMPORTANT** ENSURE THE RAISED TOILET SEAT IS SECURE BEFORE EVERY USE

At least 3 threads of the screw must be fully engaged

Inspect the seat for signs of wear and tear regularly

Do not store in daylight

Not recommended for use on toilets wider than 370mm (14½") or narrower than 300mm (12")

These Instructions must be retained by the user for reference



Units 5 and 6 Lower Vicarage  
Road Southampton  
Hampshire  
SO19 7RJ  
T: 02380 420678  
E: [info@easycare systems.co.uk](mailto:info@easycare systems.co.uk)  
W: [www.easycare systems.co.uk](http://www.easycare systems.co.uk)



ZL1079\_6

Helping Hand  
Reablement  
HI is a division of The Helping Hand Company

easyCare  
systems