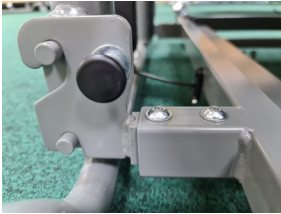


## WOBURN ULTRA-LOW BED WITH AUTO REGRESSION

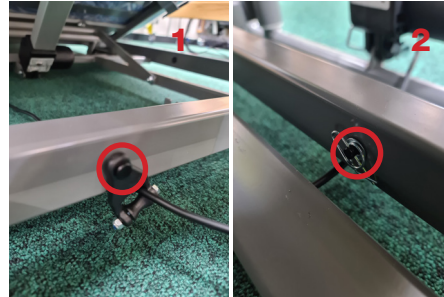


<b>Product Code:</b>	HLB799.03AR
<b>Description:</b>	<p>A fully functioning four- section Ultra-Low profiling bed. Platform can be lowered to 67mm off the floor for patient safety. Electronically setting of height, back rest or knee brake is simple, using the lockable handset.</p> <p>The Woburn Ultra-Low has a Trendelenburg function as standard. Optional bed levels, lighting and accessories available</p>
<b>Max Patient Weight:</b>	175kg (27 Stone)
<b>Safe Working Load:</b>	185kg (29 Stone)
<b>Overall Dimension:</b>	2130 x 900mm
<b>Adjustable Platform Height:</b>	67mm -640mm
<b>Mattress Dimensions:</b>	2000 x 900mm
<b>Angle of Back Rest:</b>	Up to 70 degrees
<b>Angle of Knee Brake</b>	Up to 30 degrees
<b>Bed Weight:</b>	81 kg
<b>Key Information:</b>	<ul style="list-style-type: none"> <li>• Low voltage (29v)</li> <li>• Lockable handset</li> <li>• Emergency battery backup</li> <li>• Wooden head and foot boards</li> <li>• In-built auto-regression</li> <li>• Trendelenburg as standard</li> <li>• Electric backrest and kneebreak with mechanical lower leg support</li> <li>• Easy Cleaning - complies to MHRA guidelines</li> <li>• Compatible with environmental control system</li> <li>• Comes with a 5-year warranty</li> </ul>

The latest version of our Ultra Low profiling bed has a faster build time and increased platform connection security. The platform is connected to the lift systems by simple, robust pull pins that can be operated by hand and click securely into place. These are in place on delivery. The actuator cable guide roller has changed to allow the faster build. The cable roller arrives fitted to actuator cable and only needs a pin pushing through the frame and locking with a clip.



← Lift systems are released by the pull pin. All connectors in place on delivery



← Cable roller arrives fitted to actuator cable and only needs a pin pushing through the frame and locking with a clip.



Special Products and Service

### Contact Us

Units 5 and 6 Lower Vicarage Road  
Southampton  
Hampshire  
SO19 7RJ

T: 02380 420678

E: [info@easycare systems.co.uk](mailto:info@easycare systems.co.uk)

[www.easycare systems.co.uk](http://www.easycare systems.co.uk)