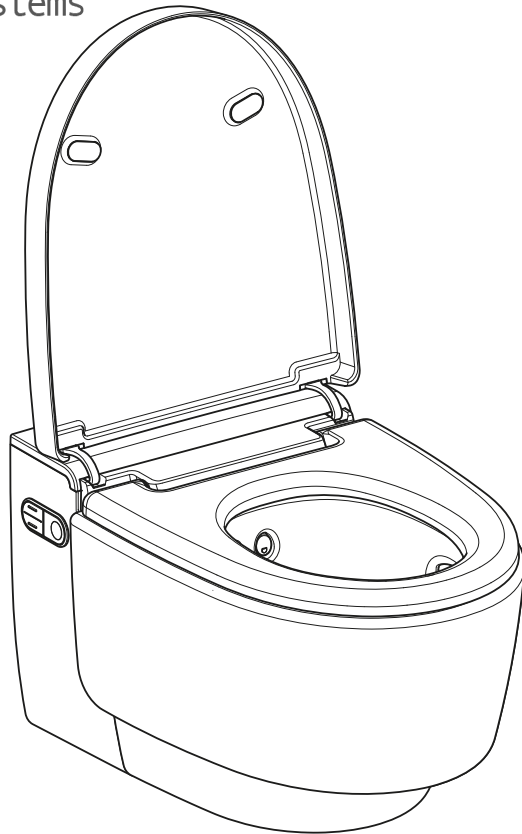


GEBERIT AQUACLEAN MERA
COMFORT

 **GEBERIT**

easy**care**
systems



USER MANUAL



Special Products and Service

www.easycare systems.co.uk

Table of contents

For your safety	5
Who is this product suitable for?	5
How is this product used?	5
What should you avoid?	5
Misuse	5
General safety notes	6
Explanation of warning notes	7
Overview of symbols on the product	8
Register your device	9
Getting to know your device	10
About Geberit AquaClean devices	10
Functional overview	10
The device at a glance	11
Operating concept.....	13
About the operating concept	13
Front side of the remote control	13
Rear side of the remote control	14
Lateral control panel	14
Status LED on the lateral control panel	15
Switching on the device	16
Switching off the device	17
Restore to factory settings	17
Geberit App.....	18
Checking compatibility	18
Downloading the Geberit Home App	18
Using the Geberit Home App	19
How to use the device	20
Getting started	20
Using the anal shower	21
Switching the oscillating motion of the anal shower on and off	21
Using the Lady shower	22
Using the dryer	22
Adjusting the shower procedure to your personal needs	23
Setting the spray intensity	23
Setting the spray arm position	23
Setting the dryer air intensity	24
Saving user profiles	24
Calling up user profiles	25
Saving a personal user profile in the Geberit Home App	25
How to program the device	26
Overview of the programming options	26
Basic settings main menu	26
Profile settings main menu	30
Care and maintenance main menu	32

Cleaning and descaling the device	35
Care instructions	35
General cleaning recommendations	35
Automatic water replacement	35
Targeted disinfection	35
Suitable cleaning agents and cleaning equipment	36
Care instructions for smooth surfaces	38
Care instructions for sanitary ceramic appliances	38
Care instructions for WC seat	39
Cleaning the WC seat ring	39
Cleaning the WC lid and housing	41
Cleaning the dryer arm and spray nozzle	42
Descaling the device	44
Device descaling message	46
Troubleshooting	47
Troubleshooting	47
The shower toilet is without function	48
Other functional errors	49
The remote control is without function	50
Replacing the remote control battery	51
Re-assigning the remote control	51
Replacing the ceramic honeycomb filter	52
Sustainability	54
Geberit Group and sustainability	54
Ecodesign – ecobalance	54
Tips for reducing the ecological footprint	54
Disposal	55
Disposal of old electrical and electronic equipment	55
End user warranty	56
End user warranty	56
Technical data and conformity	57
Technical data	57
Simplified EU Declaration of Conformity	57

For your safety

Who is this product suitable for?

As a functioning toilet, the Geberit AquaClean shower toilet is suitable for all age groups. However, children must not carry out cleaning or maintenance work without supervision.

How is this product used?

The product is suitable for the following application purposes and areas of use:

- as a shower toilet:
 - for cleaning the anal area
 - for cleaning the outer vaginal area
 - for odour extraction
- for installation in heated indoor areas
- for connection to the drinking water system
- for operation with water from reverse osmosis systems

What should you avoid?

The product must be used as intended. Do not:

- leave the WC seat ring during the shower procedure
- place loads or objects on the WC lid
- immerse the remote control in liquid
- operate without plug for Geberit AquaClean descaling agent

Misuse

Geberit accepts no liability for the consequences arising from misuse.

General safety notes

The following safety notes apply for the entire duration of the product's life cycle:

- Read the user manual before the first use to familiarise yourself with the use of the product.
- Store the user manual for future reference.
- Impurities in the filter could lead to contamination of the breathing air. In order to preclude any health risks and ensure proper functioning, the filter must be replaced annually.
- Do not use the device if it is damaged. If possible, isolate the device from the supply system and contact Geberit customer service.
- Do not open the device. It does not contain any components for the user to service or repair.
- Do not perform any changes or additional installations. Modifying the device runs the risk of fatal danger.
- Repairs may only be carried out by authorised skilled persons using original spare parts.
- Only original accessories may be used.
- Operation and maintenance work may only be performed by the operator or user as described in this user manual.
- Always use the current version of the installation manual for installing the device if the Geberit AquaClean has been removed (e.g. if you move house).
- The Geberit AquaClean must only be connected to a mains voltage conforming to the specification plate.
- Observe the manufacturer information at all times regarding the use of cleaning and descaling agents.



This document contains warning notes at various points. Warning notes are usage and situation-specific safety notes. They provide warnings on specific hazards.



These instructions correspond to the state of the device technology at the time of printing. Geberit reserves the right to make changes in terms of further development.

A current version of this and other documents is available online: www.geberit.com .

Explanation of warning notes

Warning notes are placed at the location at which the hazard may occur.

Warning notes are structured as follows:






WARNING

Nature and source of the hazard



Possible consequences if the hazard is ignored.

- ▶ Measures to prevent the hazard.

The following signal words are used to indicate residual hazards in warning notes and important information.

Symbol	Signal word and meaning
	DANGER The signal word denotes a hazard with a high degree of risk which, if not avoided, will result in death or serious injury.
	CAUTION The signal word denotes a hazard with a low degree of risk which, if not avoided, could result in minor or moderate injury.
	ATTENTION The signal word denotes a hazard, which, if not avoided, may result in material damage.
	Symbol only. Refers to important information

Overview of symbols on the product

Symbol	Meaning
	Read the safety notes and operating instructions/ operation manual before commissioning the product.
	Danger of fatal electric shock

Register your device

Warranty registration

Extend the warranty period of your Geberit AquaClean for free. Register for this within 90 working days from the installation date.



In the third year of the warranty period, Geberit shall supply spare parts free of charge in the event of any material or manufacturing faults, provided the product has been installed and put into operation by an installation company.

By computer: <http://www.geberit-aquaclean.com/registration>

By post: Fill out the warranty card supplied and send it to us.

By smartphone or tablet:



Android:

iOS:

Via Geberit Home App:



Getting to know your device

About Geberit AquaClean devices

The Geberit AquaClean device is a WC with integrated shower function. The device fulfils all the functions of a conventional toilet. Additional functions are subject to the design of your product.

Functional overview

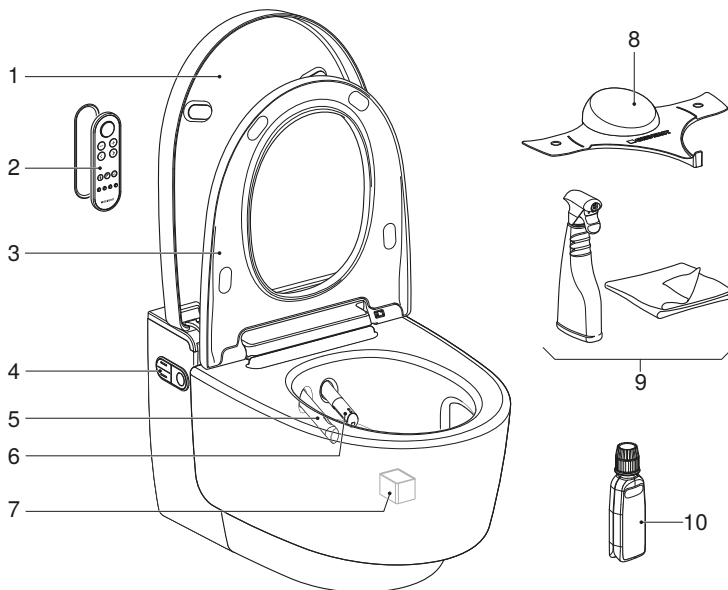
Hygiene functions:

- TurboFlush technology
- odour extraction in the WC ceramic appliance
- WhirlSpray shower technology with individual spray arm position
- spray arm with oscillating motion
- extendible Lady shower nozzle integrated into the spray nozzle with individual spray arm position
- automatic spray arm cleaning before and after each shower procedure
- dryer functionality via dryer arm
- descaling programme

Comfort functions:

- when you approach it:
 - the WC lid opens and closes by means of a proximity sensor
 - the orientation light switches on when you approach it
 - the shower water heats up
 - the WC seat ring heats up
- spray intensity can be selected
- dryer air intensity can be selected
- WC seat ring with SoftClosing
- remote control with liquid crystal display
- all functions can be operated via remote control
- 4 individual user profiles can be stored
- shower toilet functions can be operated via a lateral ergonomic control panel

The device at a glance



- 1 WC lid
- 2 Remote control with magnetic wall-mounted holder
- 3 WC seat ring with WC seat heating and QuickRelease function
- 4 Lateral control panel with status LED
- 5 Dryer arm with dryer nozzle
- 6 Spray arm with spray nozzle and Lady shower nozzle
- 7 Ceramic honeycomb filter (art. no. 242.999.00.1)
- 8 Spray shield
- 9 Geberit AquaClean cleaning set (art. no. 242.547.00.1)
- 10 Geberit AquaClean descaling agent (art. no. 147.040.00.1)

Operating concept

About the operating concept

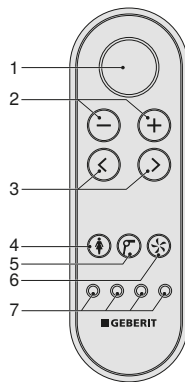
The shower toilet can be operated via remote control, the lateral control panel on the shower toilet and the Geberit Home App.



The remote control function of the Geberit AquaClean shower toilet is deactivated while the shower toilet is connected to the Geberit Home App.

Front side of the remote control

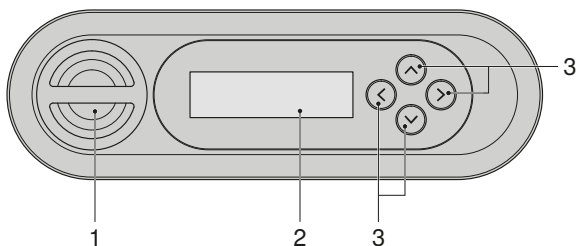
All functions for daily use can be operated from the front side of the remote control.



- 1 <Shower> button: start and stop the spray functionality / lift or lower the WC lid / stop the dryer functionality and the Lady shower
- 2 <->/<+> buttons: decrease or increase the spray intensity/dryer air intensity
- 3 <left>/<right> arrow keys: set the spray arm position
- 4 <Lady shower> button: start and stop the Lady shower
- 5 <Dryer> button: start and stop the dryer
- 6 <Odour extraction> button: start and stop odour extraction
- 7 <User profile> buttons: select the user profiles 1–4

Rear side of the remote control

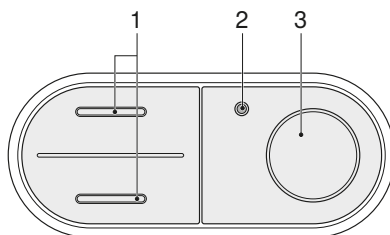
You can access system settings and additional functions from the rear side of the remote control.



- 1 Battery compartment
- 2 LCD display
- 3 <up>/<down> , <left>/<right> arrow keys

Lateral control panel

The shower toilet functions of the device can be operated from the lateral control panel on the shower toilet.



- 1 <up>/<down> buttons: decrease or increase the spray intensity
- 2 Status LED
- 3 <Shower> button: start or stop the anal shower or the Lady shower

Status LED on the lateral control panel

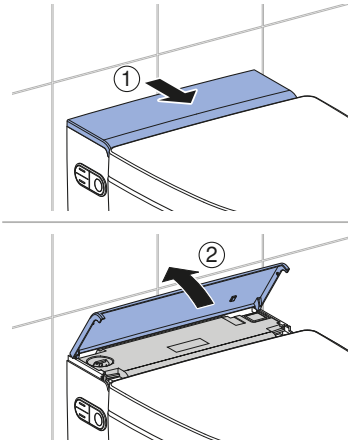
The status LED on the lateral control panel informs you of the current device status. The current condition of the device is therefore visible.

Status LED	Description
Does not light up	Heating element is switched off/economy mode is active.
Lights up blue	The heating element is switched on.
Flashes blue	The device initialises after switching on.
Flashes blue-red	► If [Descale device now?] is displayed on the remote control: descale the device. → See Descaling the device.
Lights up green	The ceramic honeycomb filter must be replaced. → See "Replacing the ceramic honeycomb filter", page 52.
Flashes red	A malfunction message is pending. ► If [Error message] is displayed on the remote control: contact customer service.
Lights up orange	The device is now descaling. It is not possible to use the shower toilet for the duration of the descaling procedure.
Flashes orange	Water replacement is being carried out. → See "Automatic water replacement", page 35.

Switching on the device

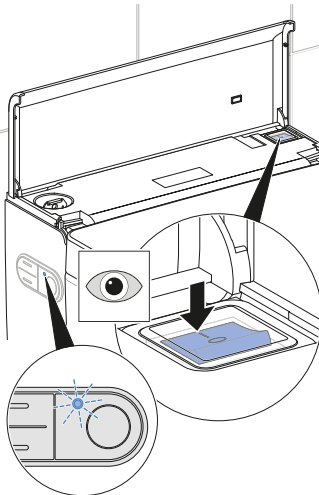
- i** Wait at least 30 seconds between the switch-off and switch-on procedures.

- 1** Open the design cover.

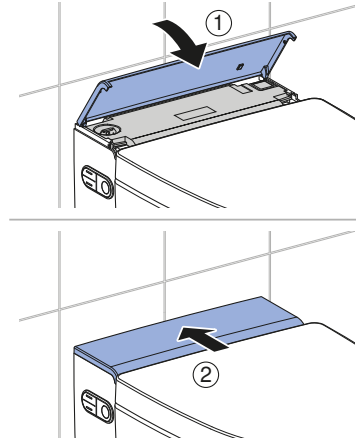


- 2** Turn on the power switch to start initialisation.

- ✓ The blue status LED flashes during initialisation.



- 3** Close the design cover.



Result

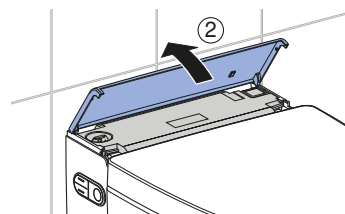
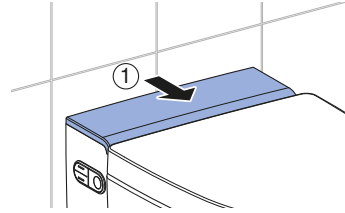
- ✓ When the blue status LED goes out, initialisation is complete.

Switching off the device

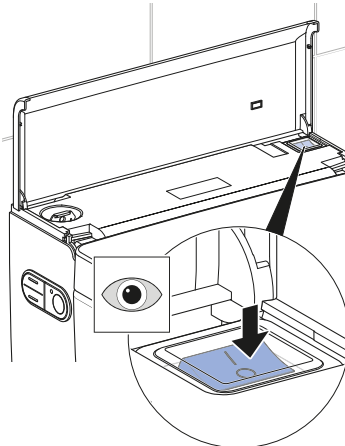
i Wait at least 30 seconds between the switch-off and switch-on procedures.

1 Close the WC lid.

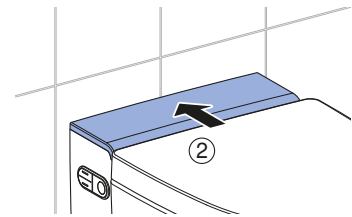
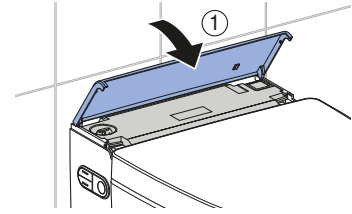
2 Open the design cover.



3 Press the power switch.



4 Close the design cover.

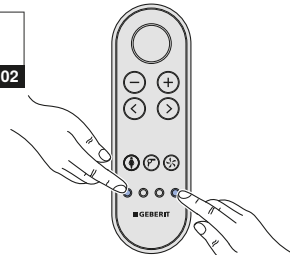


Restore to factory settings

Prerequisite

- You want to reset your personal settings and restore the factory settings as the basic settings.

▶ Hold down the <User profile> buttons on the outer right and left for more than 2 seconds.



Result

- ✓ The shower toilet is reset to its factory settings.

Geberit App

Checking compatibility

To ensure you can use the Geberit App to its full extent, you will require a smartphone with:

- Android version 6.0 (or higher), or
- iOS version 11.0 (or higher).



If the Geberit App still does not work despite meeting the prerequisites specified above, please check the permissions (Bluetooth* , location) and confirm these again if necessary.

Downloading the Geberit Home App

Download the free Geberit Home App for Android and iOS smartphones directly from the respective App Store :

-
- 1** Open the App Store on your smartphone.

 - 2** Enter “Geberit Home App” in the search field.
✓ The Geberit Home App is



displayed. 

-
- 3** Download the app.
✓ The app is downloaded and displayed on your smartphone.

Alternatively, you can scan the respective QR code to download the Geberit Home App:

Android:



iOS :



Using the Geberit Home App

The Geberit Home App communicates via a Bluetooth® interface with the Geberit AquaClean shower toilet.



The remote control function of the Geberit AquaClean shower toilet is deactivated while the shower toilet is connected to the Geberit Home App.



Please note that your device may not offer remote control or individual functions may not be available. The functions and settings in the Geberit Home App vary from device to device and are marked with (optional) where appropriate.

You can execute the following functions and settings via the Geberit Home App:

- remote control (optional)
 - using remote control functions
 - setting up, calling up and saving user profiles
- device settings
 - adjusting and saving basic settings
- Geberit customer service
 - establishing contact with Geberit customer service
- Geberit services
 - registering the device
 - extending warranty services
- software update
 - updating the firmware

You can call up the following information via the Geberit Home App:

- step-by-step instructions
 - cleaning the spray nozzle and dryer arm (optional)
 - replacing the ceramic honeycomb filter (optional)
 - displaying descaling
- explanatory videos
 - playing function videos
 - playing maintenance and cleaning videos
- troubleshooting
 - displaying error messages
- user manual
 - displaying the user manual

All settings can be saved in the Geberit Home App as presets and transferred to other devices.

How to use the device

Getting started

When using the device, the following functions should take place.

When you enter the detection range of the device,

- the orientation light switches on
- the WC lid opens
- the WC seat ring heating activates

When you sit down on the WC seat ring,

- the water heating starts
- the device enables the spray functionality
- the odour extraction unit starts
- the basic settings are activated automatically

When you start the shower procedure,

- the shower procedure will run for more than 30 seconds
- the shower procedure can be interrupted at any time
- the shower procedure can be adapted to your personal requirements
- you can change the basic settings and adapt these to your personal requirements

When you get up from the WC seat ring,

- the spray functionality deactivates
- the dryer functionality deactivates
- the spray nozzle and Lady shower nozzle are rinsed thoroughly

When you leave the detection range of the device,

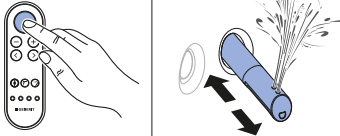
- the orientation light switches off
- the WC lid opens
- the WC seat ring heating deactivates
- the device is set to economy mode

Using the anal shower

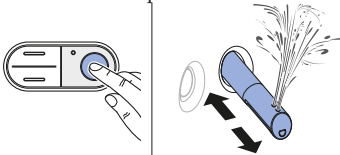
Prerequisite

- You are sitting down on the WC seat ring.

- 1 Press the <Shower> button on the remote control.



- 2 Or: press the <Shower> button on the lateral control panel.



Result

- ✓ The shower procedure starts with the oscillating motion.

- i** You can stop the shower procedure early by pressing the <Shower> button once again.

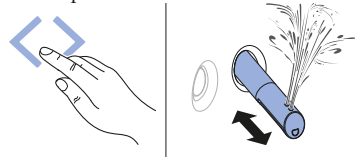
Switching the oscillating motion of the anal shower on and off

- i** The oscillating motion of the spray arm increases the cleaning effect.

Prerequisite

- The shower procedure is running.

- ▶ Press the [left] and [right] arrow keys at the same time to switch the oscillating motion off and on during the shower procedure.



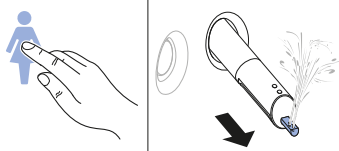
Using the Lady shower

i The woman's intimate area is a very sensitive zone and requires special and prudent care. The Lady shower must be set to your ergonomic conditions to achieve an optimal cleaning result. The position of the spray nozzle and the spray intensity must be selected so that the shower spray cannot penetrate the vagina.

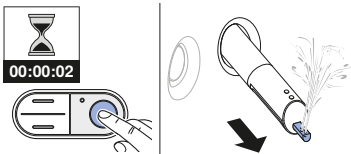
Prerequisite

- You are sitting down on the WC seat ring.

1 Press the <Lady shower> button on the remote control.



2 Or: Press the <Shower> button on the lateral control panel for 2 seconds.



Result

- ✓ The Lady shower switches on and the shower procedure starts.

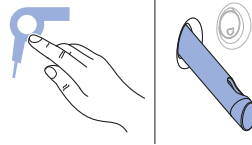
i You can stop the shower procedure early by pressing the <Lady shower> button once again.

Using the dryer

Prerequisite

- You have ended the shower procedure.

▶ Press the <Dryer> button on the remote control.



Result

- ✓ The drying procedure starts.

i You can stop the drying procedure early by pressing the <Dryer> button once again.

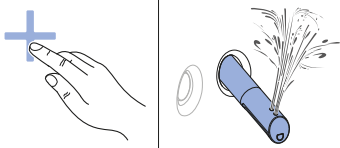
Adjusting the shower procedure to your personal needs

Setting the spray intensity

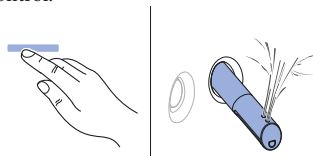
Prerequisite

- The shower procedure is running.
- The spray intensity can be set in 5 levels.

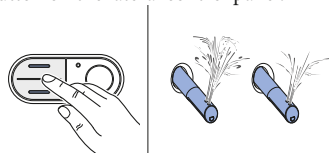
- 1** Press the <+> button on the remote control.



- 2** Press the <-> button on the remote control.



- 3** Or: Press the <top> or <bottom> button on the lateral control panel.



Result

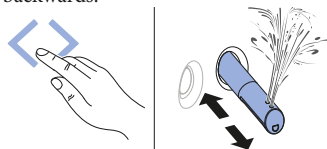
- ✓ This adapts the shower spray.

Setting the spray arm position

Prerequisite

- The shower procedure is running.
- The spray arm position can be set in 5 levels.

- ▶** Touch the <left> or <right> button.
✓ The spray arm moves forwards or backwards.



Result

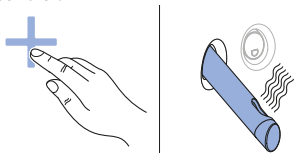
- ✓ The spray arm is optimally positioned.

Setting the dryer air intensity

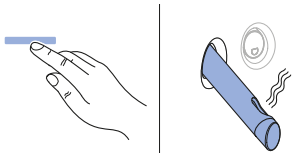
Prerequisite

- The drying procedure is running.
- The dryer air intensity can be set in 5 levels.

- 1 Press the <+> button on the remote control.



- 2 Press the <-> button on the remote control.



Result

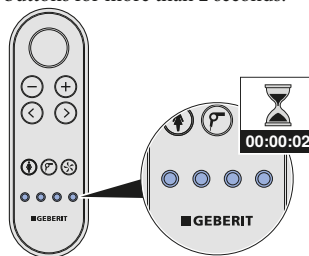
- ✓ The dryer air intensity is adjusted.

Saving user profiles

4 different user profiles can be stored via the <user profile> buttons on the remote control.

- i** User profiles allow you to access your personal settings directly. Select your user profile as soon as you sit down.

- ▶ Press one of the 4 <user profile> buttons for more than 2 seconds.



Result

- ✓ The current settings are saved to this button.

- i** The following functions can only be configured from the rear side of the remote control:
 - WC seat heating
 - shower water temperature
 - warm air temperature
- See "Profile settings main menu", page 30

Calling up user profiles



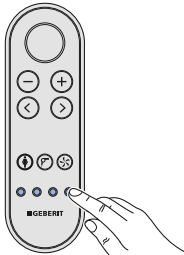
User profiles allow you to access your personal settings directly. Select your user profile as soon as you sit down.

Prerequisite

- Personal user profiles are saved to the <User profile> buttons. → See "Saving user profiles", page 24.



Press the <User profile> button on which your personal settings are stored.



Result

- ✓ Your personal user profile is called up and activated.
- ✓ The shower procedure can be started with your personal settings.

Saving a personal user profile in the Geberit Home App

Prerequisite

- The current version of the Geberit Home App is installed on your smartphone.
- The Geberit Home App is running.
- You are within the detection range of the shower toilet. User recognition does not have to be activated.



Save your settings in the Geberit Home App.

Result

- ✓ Your personal user profile is saved onto your smartphone.
- ✓ The settings apply to all connected shower toilets.

How to program the device

Overview of the programming options

The following main menus are available:

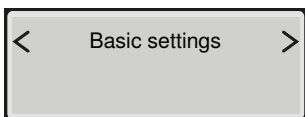
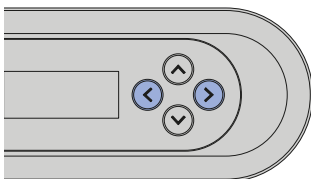
- [Basic settings]
- [Profile settings]
- [Care and maintenance]

The system settings can be configured from the rear side of the remote control:

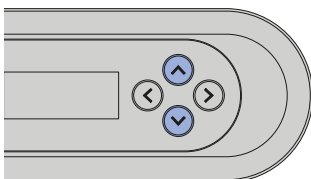
- Press any button on the rear side of the remote control to activate the display.
- Pressing the <up> arrow key for more than 2 seconds returns the display to the [Basic settings] menu.
- To save the modified settings, the menu must be run through in its entirety until the main menu appears once again on the display.
- The display is automatically deactivated after 30 seconds to save battery life.

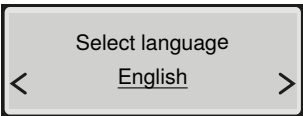
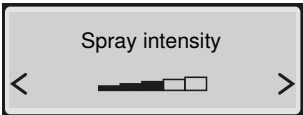
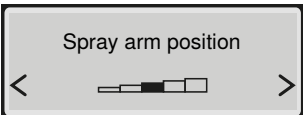
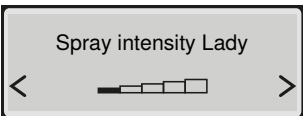
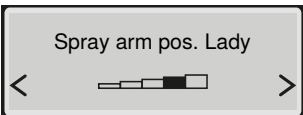
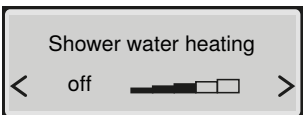
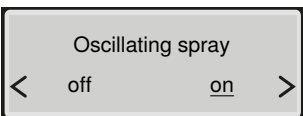

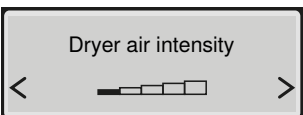
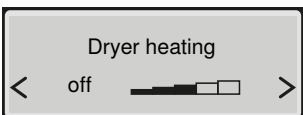
Basic settings main menu

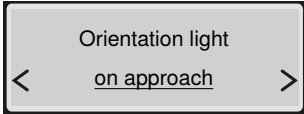
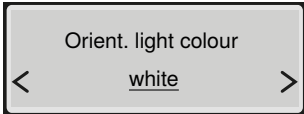
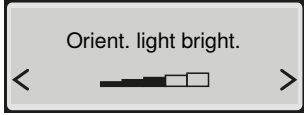
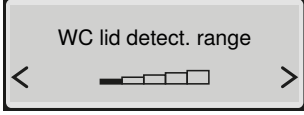
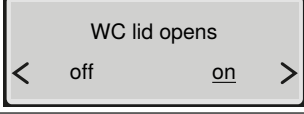
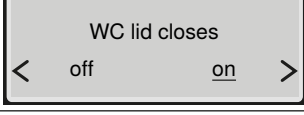
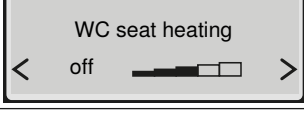
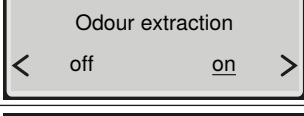
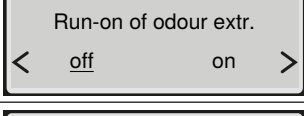
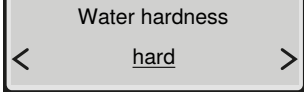
- 1 Launch the [Basic settings] main menu using the <left>/<right> arrow keys on the rear of the remote control.

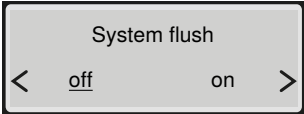
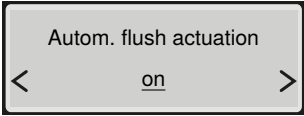


- 2 Use the <up>/<down> arrow keys to access the next menu item.



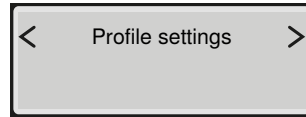
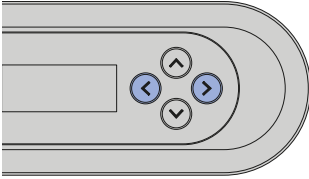
Shown on display	Note
	Sets menu language
	Sets spray intensity for the anal shower
	Sets spray arm position for the anal shower
	Sets spray intensity for the Lady shower
	Sets spray arm position for the Lady shower
	Temperature regulation of the shower water
	[on] = The oscillating motion of the spray arm is activated. [off] = The oscillating motion of the spray arm is deactivated.
	[on] = The dryer functionality starts automatically after the spray functionality. [off] = The dryer functionality is deactivated.
	Sets the dryer air intensity
	Temperature regulation of the dryer

Shown on display	Note
 <p>Orientation light <input type="checkbox"/> <u>on approach</u> <input type="checkbox"/></p>	<p>[on] = The orientation light stays on permanently. [off] = The orientation light is deactivated. [on approach] = The orientation light switches on automatically as soon as a user is detected.</p>
 <p>Orient. light colour <input type="checkbox"/> <u>white</u> <input type="checkbox"/></p>	<p>Orientation light colours: white/blue/turquoise/magenta/orange/yellow/ warm white</p>
 <p>Orient. light bright. <input type="checkbox"/> <input checked="" type="checkbox"/> <input type="checkbox"/> <input type="checkbox"/></p>	<p>Adjusts the brightness setting of the orientation light</p>
 <p>WC lid detect. range <input type="checkbox"/> <input checked="" type="checkbox"/> <input type="checkbox"/> <input type="checkbox"/></p>	<p>Sets the sensor range of the lid opener</p>
 <p>WC lid opens <input type="checkbox"/> off <input checked="" type="checkbox"/> <u>on</u> <input type="checkbox"/></p>	<p>[on] = The WC lid opens automatically. [off] = The WC lid does not open automatically.</p>
 <p>WC lid closes <input type="checkbox"/> off <input checked="" type="checkbox"/> <u>on</u> <input type="checkbox"/></p>	<p>[on] = The WC lid closes automatically. [off] = The WC lid does not close automatically.</p>
 <p>WC seat heating <input type="checkbox"/> off <input checked="" type="checkbox"/> <input type="checkbox"/> <input type="checkbox"/></p>	<p>Sets the temperature of the WC seat ring heating</p>
 <p>Odour extraction <input type="checkbox"/> off <input checked="" type="checkbox"/> <u>on</u> <input type="checkbox"/></p>	<p>[on] = The odour extraction unit starts as soon as a user is detected on the WC. [off] = The odour extraction unit is deactivated.</p>
 <p>Run-on of odour extr. <input checked="" type="checkbox"/> <u>off</u> <input type="checkbox"/> on <input type="checkbox"/></p>	<p>[on] = The odour extraction unit continues running for 2 minutes afterwards. [off] = The odour extraction unit does not continue running afterwards.</p>
 <p>Water hardness <input type="checkbox"/> <u>hard</u> <input type="checkbox"/></p>	<p>Adaptable hardness value: hard/medium/soft -> See "Device descaling message", page 46.</p>

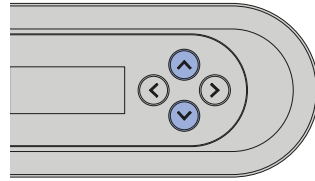
Shown on display	Note
 <p>The screenshot shows a rectangular menu box with a grey background. At the top, it says "System flush". Below that, there are two options: "off" (underlined) and "on". On the left and right sides of the options are chevron symbols "<" and ">" respectively, indicating navigation.</p>	<p>[on] = The system flush starts as soon as a user is detected on the WC. [off] = The system flush starts before the shower procedure as soon as the <Shower> button is pushed. If the system flush is switched off, then the flush time before the end of the shower procedure is approx. 15 seconds.</p>
 <p>The screenshot shows a rectangular menu box with a grey background. At the top, it says "Autom. flush actuation". Below that, there is one option: "on" (underlined). On the left and right sides of the option are chevron symbols "<" and ">" respectively, indicating navigation.</p>	<p>This menu only appears if the optional interface module for the external flush actuation is installed. [off] = Automatic flush actuation is deactivated. [on] = The flush actuates automatically once the user has left the user recognition range. [Preflush] = The flush actuates after starting the shower and after leaving the user recognition range.</p>

Profile settings main menu

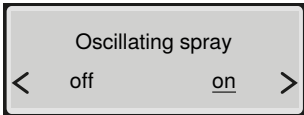

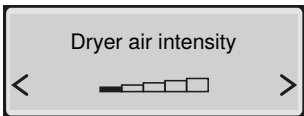
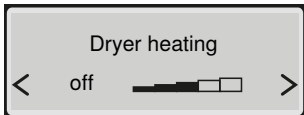
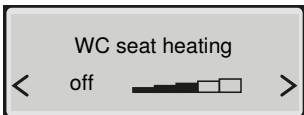
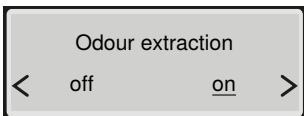
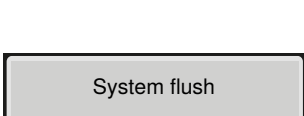
- 1 Launch the [Profile settings] main menu using the <left>/<right> arrow keys on the rear side of the remote control.



- 2 Use the <up>/<down> arrow keys to select the settings which you would like to change.

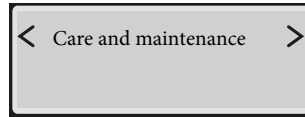
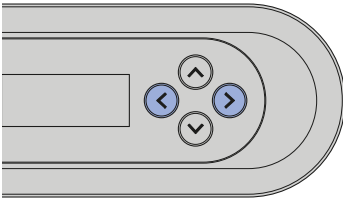


Shown on display	Note
	Corresponds to the user profile buttons on the front side of the remote control
	Sets spray intensity for the anal shower
	Sets spray arm position for the anal shower
	Sets spray intensity for the Lady shower
	Sets spray arm position for the Lady shower
	Temperature regulation of the shower water

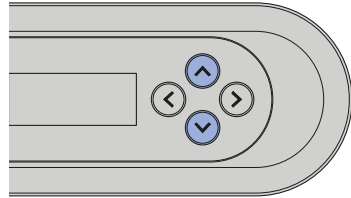
Shown on display	Note
	<p>[on] = The oscillating motion of the spray arm is activated. [off] = The oscillating motion of the spray arm is deactivated.</p>
	<p>[on] = The dryer functionality starts automatically after the spray functionality. [off] = The dryer functionality is deactivated.</p>
	<p>Sets the dryer air intensity</p>
	<p>Temperature regulation of the dryer</p>
	<p>Sets the temperature of the WC seat ring heating</p>
	<p>[on] = The odour extraction unit starts as soon as a user is detected on the WC. [off] = The odour extraction unit is deactivated.</p>
	<p>[on] = The system flush starts as soon as a user is detected on the WC. [off] = The system flush starts before the shower procedure as soon as the <Shower> button is pushed. If the system flush is switched off, then the flush time before the end of the shower procedure is approx. 15 seconds.</p>

Care and maintenance main menu

- 1 Launch the [Care and maintenance] main menu using the <left>/<right> arrow keys on the rear side of the remote control.


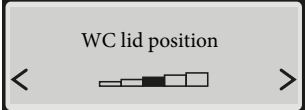


- 2 Use the up/down arrow keys to access the next menu item.



Shown on display	Note
	Display in days until the next descaling
	[yes] = Start descaling. → See Descaling the device. [no] = Continue with the [Filter replaced?] menu
	Status message that descaling is being prepared
	Prompt to add the descaling agent
	The descaling procedure should not be cancelled after adding the descaling agent because it would otherwise be flushed away unused. The display shows [Device is flushing...].
	Status message regarding the automatic descaling procedure

Shown on display	Note
<div style="border: 1px solid black; padding: 5px; background-color: #f0f0f0;"> Descaling completed </div>	Displays that descaling is complete
<div style="border: 1px solid black; padding: 5px; background-color: #f0f0f0;"> Filter replaced? < <u>no</u> yes > </div>	Confirmation of the filter replacement. → See "Replacing the ceramic honeycomb filter", page 52. [yes] = Filter replaced [no] = Continue with the [Show device info] menu
<div style="border: 1px solid black; padding: 5px; background-color: #f0f0f0;"> Show device info? < <u>no</u> yes > </div>	[yes] = Display of the device information [no] = Continue with the [Error message] menu
<div style="border: 1px solid black; padding: 5px; background-color: #f0f0f0;"> Model XXX </div>	Displays the type/equipment version
<div style="border: 1px solid black; padding: 5px; background-color: #f0f0f0;"> Article number 146.xxx.xxx. </div>	Displays the Geberit article number
<div style="border: 1px solid black; padding: 5px; background-color: #f0f0f0;"> Serial number HBxxxxxxxxx </div>	Displays the device serial number (required in case of service)
<div style="border: 1px solid black; padding: 5px; background-color: #f0f0f0;"> Commissioning date dd.mm.yyyy </div>	Displays the date the device was first switched on
<div style="border: 1px solid black; padding: 5px; background-color: #f0f0f0;"> Error message xxxxx </div>	An error code is displayed only in the event of an error. → See "Status LED on the lateral control panel", page 15.
<div style="border: 1px solid black; padding: 5px; background-color: #f0f0f0;"> Demonstration mode < <u>off</u> on > </div>	[on] = Switch on demonstration mode [off] = Continue with the [Calibrate WC lid] menu
<div style="border: 1px solid black; padding: 5px; background-color: #f0f0f0;"> Activate mode? < <u>no</u> yes > </div>	Safety query for activating demonstration mode

Shown on display	Note
	<p>Safety query for setting the opening angle of the WC lid</p>
	<p>Sets the opening angle for the WC lid</p>

Cleaning and descaling the device

Care instructions

You have selected a product with a high-grade surface. Please follow the care instructions below.

The manufacturer does not assume any liability for product damage that arises as a result of incorrect care and handling.

General cleaning recommendations

Cleaning the shower toilet at the recommended cleaning intervals will ensure that it functions properly. The shower toilet must only be cleaned using suitable cleaning agents and cleaning equipment. → See "Suitable cleaning agents and cleaning equipment", page 36.

Cleaning interval	Cleaning activity
Daily	<ul style="list-style-type: none">▶ Remove water drops with a soft, lint-free cloth to avoid limescale stains.
Weekly	<ul style="list-style-type: none">▶ Clean the WC ceramic appliance with Geberit AquaClean cleaning agent. → See "Care instructions for sanitary ceramic appliances", page 38.▶ Clean all surfaces and corners thoroughly. → See "Cleaning the WC lid and housing", page 41.▶ Test spray nozzle and clean if required. → See "Cleaning the dryer arm and spray nozzle", page 42.▶ Rinse the spray nozzle under running water to remove foreign substances.

Automatic water replacement

If the shower toilet has not been used for more than 2 months, the device is rinsed with fresh water after it is switched on. This ensures optimum shower water quality before usage.

Targeted disinfection

Disinfection is only required if there is a definite risk of infection as a result of germs. Otherwise, keep to the recommended cleaning intervals and carry out the specified cleaning activities. → See General cleaning recommendations.

ATTENTION

Aggressive disinfectants

Disinfection using aggressive disinfectants can cause surface damage.

- ▶ Only use alcohol-based disinfectants that are also suitable for hand and skin disinfection.
- ▶ Observe the safety notes from the manufacturer when handling hazardous substances.

Type of disinfection	Disinfection procedure
<p>Wet wipe disinfection</p> <p>For use on smooth surfaces that can be rubbed</p>	<ul style="list-style-type: none"> ▶ Moisten all surfaces with disinfectant. ▶ Allow the disinfectant to take effect according to the manufacturer information. ▶ Then rub the surfaces with single-use towels.

Suitable cleaning agents and cleaning equipment

ATTENTION

Aggressive descaling agents

Unsuitable descaling agents may cause damage to the device.

- ▶ Only use Geberit AquaClean descaling agents to descale the device.
 - ▶ Refer to the “Descaling the device” section.
-

ATTENTION






Aggressive and scouring cleaning agents


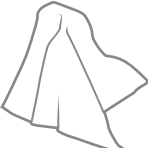

Cleaning using aggressive and scouring cleaning agents can cause surface damage.

- ▶ Use Geberit AquaClean cleaning agents.
- ▶ Pay attention to the cleaning and care instructions.

Using the Geberit AquaClean cleaning set is recommended, as this set includes a ready-made cleaning agent that is ideal for cleaning all Geberit AquaClean surfaces.

Recommended properties of suitable cleaning agents and cleaning equipment for best cleaning results:

Symbol	Properties of suitable cleaning agents
	Skin-friendly
	Cleaning agents are permitted to have a low acid content, e.g. diluted citric acid
	Low-foaming
	Liquid
	Water-dilutable

Symbol	Suitable cleaning equipment
	Soft, fine-pored sponges
	Lint-free, soft cloths which are free of dust
	Toilet brush

Care instructions for smooth surfaces

All smooth surfaces can be cleaned hygienically with water and a mild, liquid cleaning agent that is kind to the skin.



Aggressive and scouring cleaning agents can damage the surface. Only use mild, liquid cleaning agents that are kind to the skin. The Geberit AquaClean cleaning set (art. no. 242.547.00.1) includes a ready-made cleaning agent that is optimal for cleaning all Geberit AquaClean surfaces.

Care instructions for sanitary ceramic appliances

- Use standard cleaning agents only in compliance with the respective manufacturer's information.
- Ensure that the seat of the ceramic appliance or the urinal lid is opened or dismantled during the application time of cleaning agents.
- Only use cleaning agents containing chlorine or ones that are abrasive or scouring in the case of heavy deposits.
- Never use sharp or pointed objects when cleaning.

Dirt	Care measures
For daily cleaning	<ul style="list-style-type: none">▶ Use mild liquid cleaning agents and water.▶ Dry the surface with a soft, lint-free cloth.
Stubborn stains	<ul style="list-style-type: none">▶ Generally speaking, use cleaning agents suitable for ceramic appliances or a mild scouring liquid.▶ Remove existing limescale deposits using a mild cleaner containing vinegar.▶ Clean the surface with water.▶ Dry the surface with a soft, lint-free cloth.
With heavy deposits	<p>Organic deposits (brown to black in colour):</p> <ul style="list-style-type: none">▶ Clean the affected areas with a standard chlorine cleaner. Note the information provided by the cleaning agent manufacturer. The application time of the chlorine cleaner may not exceed 2 h.▶ Clean the surface with water.▶ Dry the surface with a soft, lint-free cloth. <p>Silicate deposits (grey in colour):</p> <ul style="list-style-type: none">▶ Moisten a microfibre cloth with standard ceramic glass cleaner.▶ Clean the affected areas with in a circular motion. Silicate deposits are very resistant, which means that several cleaning cycles may be required.▶ Clean the surface with water.▶ Dry the surface with a soft, lint-free cloth.

Care instructions for WC seat

Please note the following when cleaning the WC seat:

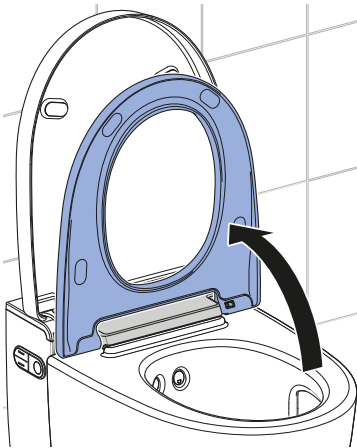
- Ensure that the WC seat is opened or dismounted during the application time of cleaning agents.
- Never use cleaning agents that contain chlorine or acid or that are corrosive.
- Never use cleaning agents that are abrasive or may scratch the surface.
- Never use sharp or pointed objects when cleaning.
- Use mild liquid cleaning agents and water.
- Use a soft, lint-free cloth.
- Remove any substances containing solvents immediately.

Cleaning the WC seat ring

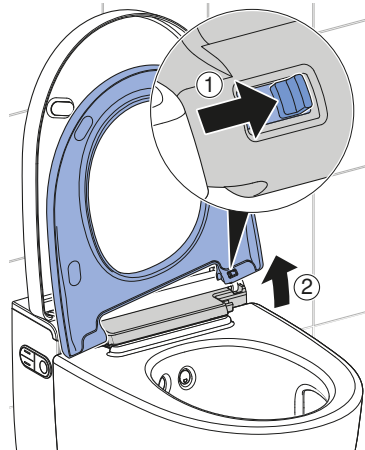
The WC seat ring can be removed easily for simple cleaning.

- i** Be careful not to scratch the surface of the WC seat. Always place the components on a soft, non-scratching underlay.

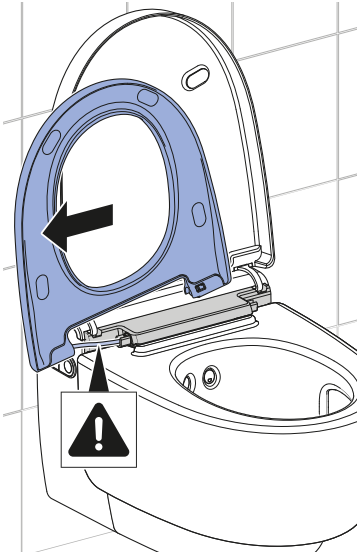
- 1** Place the WC seat ring in the vertical position.



- 2** Slide the release button to the right and lift the WC seat ring out of the right-hand bracket.



-
- 3** Slide the WC seat ring out of the left-hand hinge. During dismantling and cleaning, take care to ensure that the cable does not become kinked or damaged.



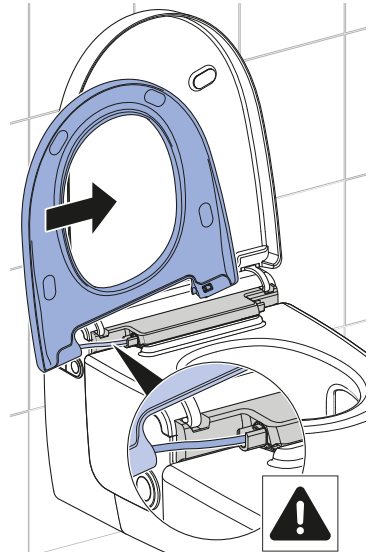
✓ The WC seat ring is removed and can be cleaned.

-
- 4** Spray the surfaces with Geberit AquaClean cleaning agent.

-
- 5** Wipe the surfaces with a soft, lint-free, damp cloth.

-
- 6** Then dry the surfaces with a soft, lint-free cloth.

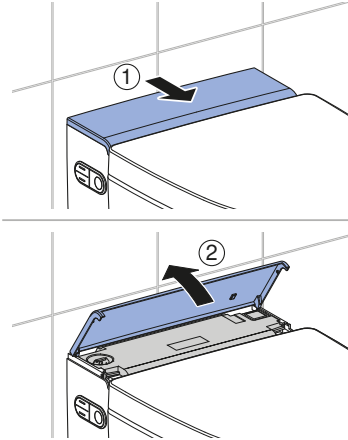
-
- 7** After cleaning is complete, re-assemble the device in reverse order of disassembly. Take care to ensure that the cable is guided back correctly into the device and that it does not become kinked or damaged during this process.



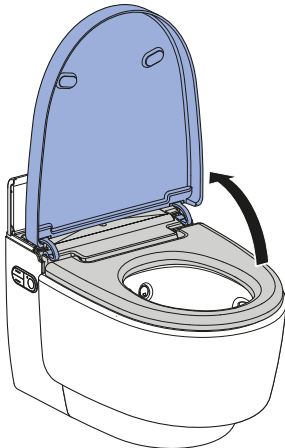
Cleaning the WC lid and housing

- i** Be careful not to scratch the surface of the WC seat. Always place the components on a soft, non-scratching underlay.

- 1** Open the design cover.

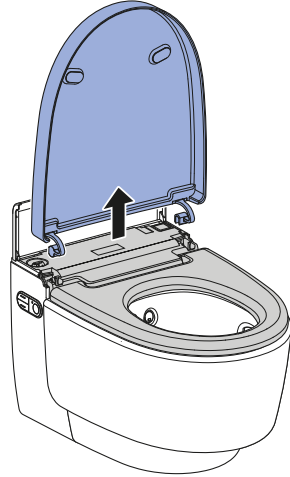


- 2** Gently lift the WC lid to activate the lid lifter.



- ✓ The WC lid lifts slowly and stops in the vertical position.

- 3** Lift the WC lid vertically out of its position.



- 4** Spray the surfaces with Geberit AquaClean® cleaning agent.

- 5** Wipe the surfaces with a soft, lint-free, damp cloth.

- 6** Then dry the surfaces with a soft, lint-free cloth.

- 7** After cleaning is complete, re-assemble the device in reverse order of disassembly.

Cleaning the dryer arm and spray nozzle



- For cleaning, use a soft, lint-free cloth.
- Geberit AquaClean cleaning agent is particularly suitable for all surfaces of the device.

1

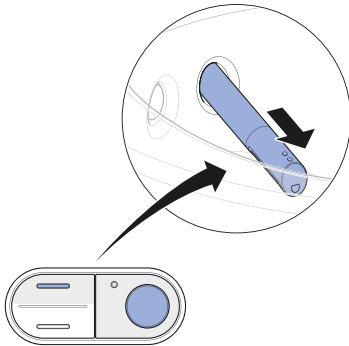
Open the WC lid.

2

Place the WC seat ring in the vertical position.

3

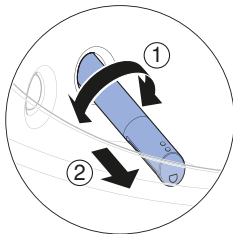
Press the <up> button and the <Shower> button at the same time.



✓ The spray arm extends fully.

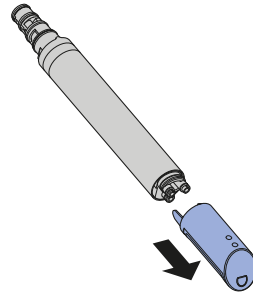
4

Twist the spray arm in any direction and remove it.



5

Pull out the spray nozzle for cleaning and descaling.



6

Replace the spray nozzle if it can no longer be completely cleaned and descaled.

7

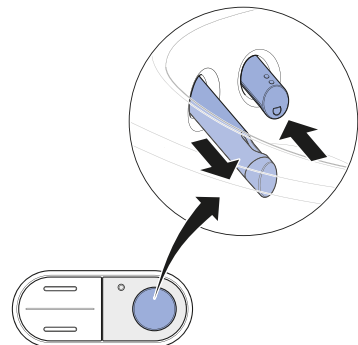
Spray the spray arm with Geberit AquaClean cleaning agent. Then rinse the spray arm with water.

8

Dry both parts carefully before re-assembling and re-fitting the spray arm.

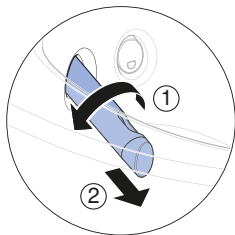
9

Press the <Shower> button to extend the dryer arm.

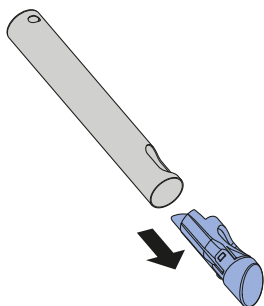


✓ The spray arm retracts and the dryer arm extends.

-
- 10** Unlock the dryer arm by turning it 90° to the left. Pull the dryer arm out.



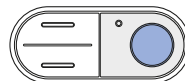
-
- 11** Press the unlock button on the rear side of the dryer arm and pull out the dryer nozzle.



-
- 12** Clean the dryer arm and dryer nozzle. Dry both parts carefully before re-assembling the dryer arm.

-
- 13** Replace the dryer nozzle if it can no longer be completely cleaned.

-
- 14** Press the <Shower> button on the lateral control panel.



✓ The dryer arm retracts completely.

Result

✓ The cleaning procedure is now complete.

Descaling the device

Information on descaling:

- During the descaling procedure, you can continue to use the device without the shower toilet functions.
- The descaling procedure lasts up to 60 minutes. During this time, the LED lights up orange and you can call up the descaling status via the display. Once the orange status LED switches off, the spray functionality is once again ready for operation.

ATTENTION

Aggressive descaling agents

Unsuitable descaling agents may cause damage to the device.

- ▶ Only use Geberit AquaClean descaling agents to descale the device.
- ▶ Refer to the “Descaling the device” section.

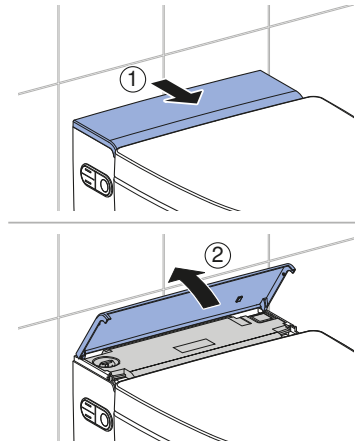


The descaling procedure should not be cancelled after filling the descaling agent because it would otherwise be flushed away unused. The display shows [Device is flushing...].

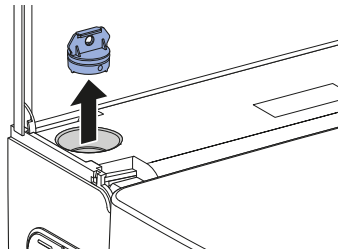
Prerequisite

- The status LED on the lateral control panel and on the orientation light flashes blue-red.
- At the touch of a button, the display on the rear of the remote control shows [Descal device now] or [Descal device now, device blocked]

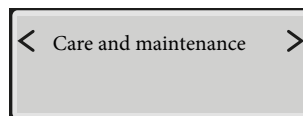
- 1 Open the design cover.



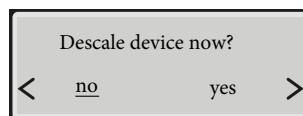
- 2 Remove the plug.



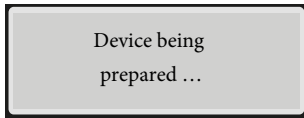
- 3 Launch the [Care and maintenance] main menu using the buttons on the rear side of the remote control.



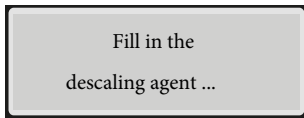
- 4 Use the <down> arrow key to select the [Descal device now?] menu item.



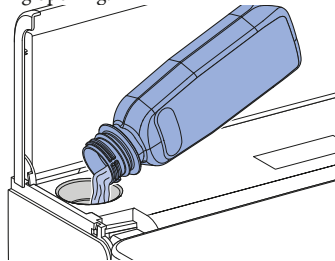
- 5** Select <yes> via the arrow keys and confirm with the <down> arrow key.
✓ The display shows



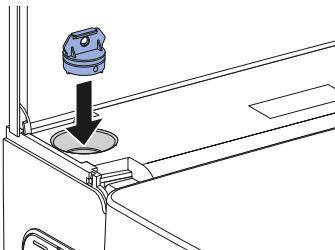
- 6** Wait until the device is ready for descaling.
✓ The display shows



- 7** Pour a bottle (125 ml) of Geberit AquaClean descaling agent into the filling opening.

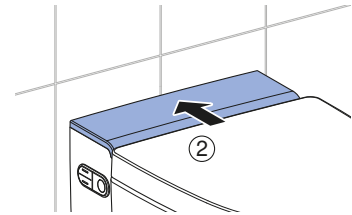
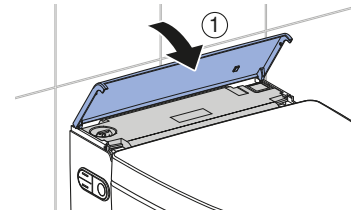


- 8** Re-insert the plug.

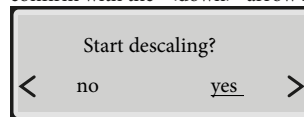


- 9** Remove splashes of descaling agent immediately with a damp cloth.

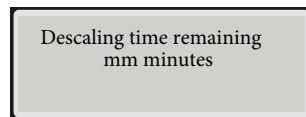
- 10** Close the design cover.



- 11** Select <yes> via the arrow keys and confirm with the <down> arrow key.



- ✓ A status message appears on the display which shows the duration of the descaling procedure.



- ✓ The status LED on the lateral control panel lights up orange until the descaling procedure is complete.

Device descaling message

During installation, the device was configured for the local water hardness in accordance with the following table. This adaptation prevents unnecessary descaling procedures and helps protect the environment. Nevertheless, regular descaling of the device is required.

Area	°fH	°dH	°eH
soft	≤ 15	≤ 8	≤ 11
medium	15–25	8–14	11–18
hard	> 25	> 14	> 18

The following table helps you to identify descaling messages and to carry out the necessary fault clearance for each message.

Cause	Message	Fault clearance
Regular descaling: at least once a year	<ul style="list-style-type: none"> The status LED on the lateral control panel and on the orientation light are flashing blue-red. The display shows [Descale device now]. 	<ul style="list-style-type: none"> ▶ Perform descaling. → See Descaling the device.
Locked device: multiple rejected descaling requests	<ul style="list-style-type: none"> The status LED on the lateral control panel and on the orientation light are flashing blue-red. The display shows [Descale device now, device locked] . 	<p>Prerequisite</p> <ul style="list-style-type: none"> – A shower procedure is no longer possible without descaling. ▶ Perform descaling. → See Descaling the device.

Troubleshooting

Troubleshooting

The table below explains what you need to do in the event of a fault:

- Carry out the steps one after the other until the device is no longer demonstrating any faults or is working as normal again.
- Be sure to follow the steps in order.

Step	Description of problem	Fault clearance
1	The shower toilet is demonstrating a fault or is not working as normal.	<ul style="list-style-type: none"> ▶ Switch off the device. → See "Switching off the device", page 17. ▶ Wait 30 seconds. ▶ Switch on the device. → See "Switching on the device", page 16.
2	Step 1 has been carried out. The shower toilet continues to demonstrate a fault or still does not work as normal.	<ul style="list-style-type: none"> ▶ Test the status LED on the lateral control panel. → See Status LED on the lateral control panel.
3	Steps 1 and 2 have been carried out. The shower toilet continues to demonstrate a fault or still does not work as normal.	<ul style="list-style-type: none"> ▶ Check the problem descriptions in the faults table and carry out the relevant fault clearance as required. → See "The shower toilet is without function", page 48 and Other functional errors.
4	Steps 1 to 3 have been carried out. The shower toilet continues to demonstrate a fault or still does not work as normal.	<ul style="list-style-type: none"> ▶ Contact customer service.

The shower toilet is without function

The following table will help you with troubleshooting if the shower toilet is without function.



DANGER **Electric shock**

Incorrect maintenance work or troubleshooting can lead to serious injury or death.

- ▶ In case of malfunctions, the device must immediately be switched off at the power switch and the customer service must be contacted.
- ▶ Only trained electrically skilled persons are permitted to perform electrical installations on the device.
- ▶ Only trained professionals are permitted to perform retrofitting on the device.



The shower toilet can be used as a normal toilet even in the event of a malfunction. The spray arm must be fully retracted. You start the toilet flush as usual by pressing the actuator buttons.

Description of problem	Cause	Fault clearance
The fuse or residual-current device in the electrical distributor trips once.	Malfunction has occurred	<ul style="list-style-type: none"> ▶ Replace or reset the fuse in the electrical distributor. ▶ Reset the residual-current device in the electrical distributor. <p>Result</p> <ul style="list-style-type: none"> ✓ The device initialises again after switching on. Using the device does not trip any fuses or residual-current devices.
The fuse or residual-current device in the electrical distributor trips repeatedly when the device is used.	Device defective	<ul style="list-style-type: none"> ▶ Replace or reset the fuse or residual-current device in the electrical distributor. ▶ Disconnect the mains plug (if available). ▶ contact customer service.
The product has an unknown technical defect.	Malfunction has occurred	<ul style="list-style-type: none"> ▶ Trip the fuse or residual-current device in the electrical distributor. ▶ Disconnect the mains plug (if available). ▶ contact customer service. ▶ Have the power supply tested by a skilled person.

Other functional errors

The following table will help you with troubleshooting if individual functions of the shower toilet have failed.



The shower toilet can be used as a normal toilet even in the event of a malfunction. The spray arm and dryer arm must be fully retracted. You start the toilet flush as usual by pressing the buttons on the cistern.



If the device is defective, switch it off using the power switch.

Description of problem	Cause	Fault clearance
The status LED flashes red.	Malfunction described in error message has occurred	<ul style="list-style-type: none"> ▶ Note the number of the error message on the display of the remote control and inform customer service.
The WC lid touches the wall.	WC lid set incorrectly	<ul style="list-style-type: none"> ▶ Set the opening angle of the WC lid so that it does not touch the wall. → See "Care and maintenance main menu", page 32. <p>Result</p> <ul style="list-style-type: none"> ✓ The device initialises again after switching on.
The WC lid lifts slowly and remains in the vertical position.	Design cover set incorrectly	<ul style="list-style-type: none"> ▶ Check the position of the design cover. ▶ Switch off the shower toilet at the power switch for 30 seconds.
Odour neutralisation is weak or ineffective.	Ceramic honeycomb filter dirty	<ul style="list-style-type: none"> ▶ See "Replacing the ceramic honeycomb filter", page 52.
The spray arm or dryer arm is not functioning correctly.	Malfunction has occurred	<ul style="list-style-type: none"> ▶ Switch off the shower toilet at the power switch for 30 seconds. <p>Result</p> <ul style="list-style-type: none"> ✓ The device initialises again after switching on.
The cleaning effect of the shower has weakened.	Spray nozzles clogged or defective	<ul style="list-style-type: none"> ▶ Clean or replace the spray nozzles. ▶ See Descaling the device.
When using the shower function, the shower toilet no longer reaches the usual temperature.	Shower toilet dirty	<ul style="list-style-type: none"> ▶ See Descaling the device. ▶ Switch off the shower toilet at the power switch for 30 seconds. <p>Result</p> <ul style="list-style-type: none"> ✓ The device initialises again after switching on.

The remote control is without function

The following table will help you with troubleshooting if:

- the remote control is not functioning,
- the remote control is unable to control the shower toilet.



The remote control is inactive while the Geberit Home App is in use.



Should the remote control fail to function, you can use the lateral control panel instead.



If the device is defective, switch it off using the power switch.

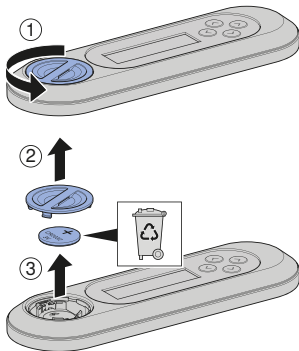
Step	Description of problem	Fault clearance
1	The remote control display shows [no connection] when buttons are pressed.	<ul style="list-style-type: none"> ▶ Re-assign the remote control. → See "Re-assigning the remote control", page 51 <p>Result</p> <p>✓ The display shows [Pairing ok].</p>
2	The remote control is unable to control the shower toilet. The remote control has been re-assigned.	<ul style="list-style-type: none"> ▶ Replace battery (type CR2032). → See Replace the remote control battery. ▶ Re-assign the remote control. → See "Re-assigning the remote control", page 51 .
3	The battery has been replaced and the remote control has been re-assigned. The remote control display still remains unresponsive when buttons are pushed.	<ul style="list-style-type: none"> ▶ Contact customer service. <p>Result</p> <p>✓ Remote control is defective.</p>

Replacing the remote control battery

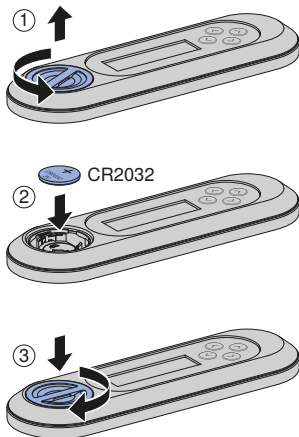
Prerequisite

- During the entire procedure, the remote control must be located in the reception range of the shower toilet.

- 1 Remove the used battery. Dispose of the used battery appropriately.



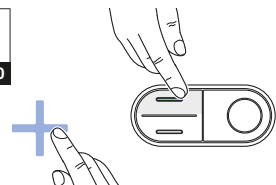
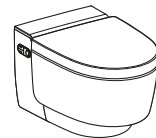
- 2 Insert a new CR2032 battery.



Re-assigning the remote control

- i** The device can only be operated with a single, assigned remote control.

- ▶ Press the <+> button on the remote control and the <up> button on the lateral control panel for approx. 30 seconds until [Pairing ok] appears on the display.



Result

- ✓ The shower toilet can be controlled by remote control.

The WC lid cannot be inserted

The closing mechanism of the lid lifter was activated, although the WC lid was not installed.

- 1 Press the <Shower> button on the remote control to reset the hinge position.
- 2 Insert the WC lid vertically.
- 3 Press the <Shower> button once again on the remote control to close the WC lid.

Replacing the ceramic honeycomb filter



CAUTION

Possible health hazard

Impurities in the filter could lead to contamination of the breathing air.

- ▶ Replace the filter annually.



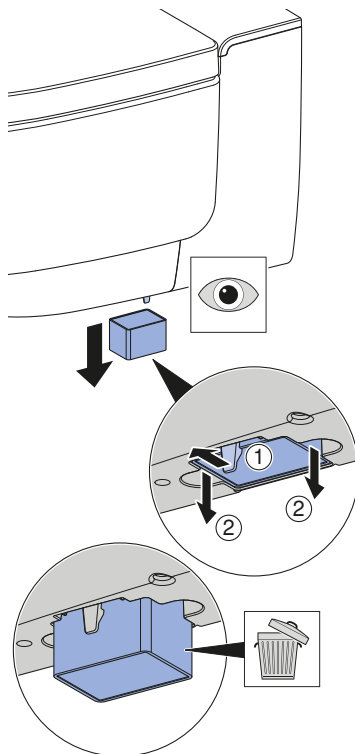
The ceramic honeycomb filter is located on the bottom right side of the device. It is fastened with a catch spring.

Prerequisite

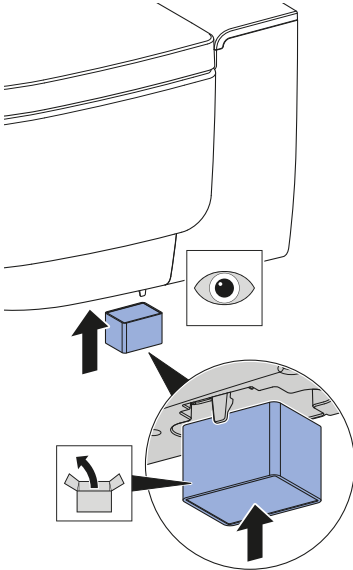
- The status LED on the control panel lights up green.
- At the push of a button, the display shows [Replace filter] on the rear side of the remote control.

1

Bend the catch spring gently to the side to unfasten the ceramic honeycomb filter. At the same time, remove the used filter from the bracket.

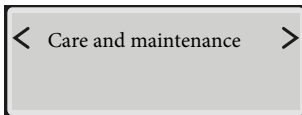


2 Insert the new filter.

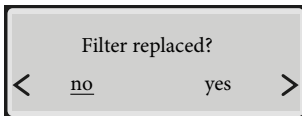


✓ The catch spring is used to fasten the new filter.

3 Launch the [Care and maintenance] main menu using the buttons on the rear side of the remote control.



4 Use the <down> arrow key to select the [Filter replaced?] menu item.



5 Use the arrow keys to select <yes> .

Result

✓ Odour neutralisation will now function again.

Sustainability

Geberit Group and sustainability

As the European market leader in the sanitary industry, Geberit stands for water saving, resource efficiency and sustainable building. The Group has proven for decades that long-term business success is compatible with environmentally friendly actions and social policies. A company management geared to sustainability helps to save costs while minimizing risks at the same time. Geberit aims to act as a role model and set standards for its customers, suppliers and other partners. This means creating water-saving and sustainable products, using safe, environmentally friendly and resource-efficient production practices, engaging in purchasing and logistics activities with high environmental and ethical standards, and offering excellent working conditions for more than 12 000 dedicated and highly qualified employees worldwide. One way in which the company is showing its awareness of social responsibility is by participating in water relief projects around the world.

Ecodesign – ecobalance

The basis for sustainable products is formed by a systematic innovation process in which product materials and functional principles are chosen that are as environmentally friendly as possible, risks are minimised and a high degree of resource efficiency is strived for. We can supply a detailed ecobalance for this product upon request.

Tips for reducing the ecological footprint

This product was developed with the utmost care, also with regard to the consumption of energy, water and resources (see also technical data). You can reduce the ecological footprint of the product by observing the following recommendations:

- Switch off the device when you go on holiday.
- Interrupt the spray functionality manually in order to save hot water.
- Use small amounts of paper for drying.
- Switch off the heating function of the water heater when you do not need warm shower water.
- Use environmentally friendly cleaning agents.
- Carry out regular maintenance on the device and handle it with care in order to extend the service life.
- Return defective devices to Geberit or a designated partner for appropriate disposal.

Disposal

Disposal of old electrical and electronic equipment



■

In accordance with Directive 2012/19/EU (WEEE - Waste Electrical and Electronic Equipment) manufacturers of electrical equipment are obliged to take back old equipment and to dispose of it appropriately. The symbol indicates that the product cannot be disposed of with non-recyclable waste. Old equipment should be returned directly to Geberit where it will be disposed of appropriately. Addresses to which equipment can be returned can be requested from the relevant Geberit sales company.

End user warranty

End user warranty

The following end user warranty is provided in addition to and does not affect your contractual partner's liability for defective products.

The Geberit company ("Geberit") responsible for the place of installation of the Geberit AquaClean product ("product") shall provide the end user with a warranty for the product identified by the serial number on the warranty card. The scope of this warranty is as follows:

1. Geberit guarantees that the product shall be free from material defects and manufacturing faults for a period of 3 years ("warranty period") calculated from the installation date at the end user's premises. Warranty scope:
 - a) Within the first 2 years of the warranty period, a customer service representative authorised by Geberit shall rectify any material defects or manufacturing faults free of charge by repairing or replacing the defective parts.
 - b) In the third year of the warranty period, Geberit shall supply replacements for defective parts free of charge to the customer service representative authorised by Geberit and contracted by the end user to repair the product.
2. The end user shall not be entitled to assert more extensive claims against Geberit on the basis of this warranty.
3. Claims can only be made under the warranty if:
 - a) the product has been installed and put into operation by an installation company or by customer service personnel authorised by Geberit.
 - b) no modifications have been made to the product; in particular, no parts have been removed, replaced or added.
 - c) the product defect has not been caused by improper installation or use, nor can it be attributed to inadequate care or maintenance.
 - d) claims shall only be made during the third year of the warranty period if the end user has completed the enclosed warranty card in full and returned it to the Geberit company responsible for the place of installation within 90 working days of the installation date.
4. This warranty applies solely to places of installation in countries in which Geberit has its own sales company or is represented by a sales partner.
5. The warranty is exclusively subject to the substantive law of the country in which Geberit has its place of business. The United Nations Convention on Contracts for the International Sale of Goods is expressly excluded. The exclusive place of jurisdiction for all disputes arising from or in connection with this warranty is the location of Geberit's headquarters.



Technical data and conformity

Technical data

Nominal voltage	230 V AC
Mains frequency	50 Hz
Power consumption	2000 W
Power consumption standby	≤ 0.5 W
Protection degree	IPX4
Protection class	I
Frequency range	2400 MHz–2483.5 MHz
Maximum output power	0 dBm
Wireless technology	Bluetooth® Low Energy ¹⁾
Mains connection	Mains connection via system plug with flexible three-wire sheathed cable
Spray time	30–50 s
Number of shower pressure settings, shower spray	5
Water temperature	34–40 °C
Operating temperature	5–40 °C
Flow pressure	50–1000 kPa
	0.5–10 bar
Minimum flow pressure	50 kPa
	0.5 bar
Calculated flow rate	0.03 l/s
Maximum load, WC seat	150 kg

¹⁾ The Bluetooth® brand and its logos are the property of Bluetooth SIG, Inc. and are under licence by Geberit.

Simplified EU Declaration of Conformity

Geberit International AG hereby declares that the radio equipment type Geberit AquaClean Mera is in compliance with Directive 2014/53/EU.

The full text of the EU declaration of conformity is available at the following Internet address: <https://doc.geberit.com/968881000.pdf>.



Easy Care Systems Ltd.

Units 5 and 6 Lower Vicarage Road
Southampton
Hampshire
SO19 7RJ
T: 02380 420678
E: info@easycareystems.co.uk

Special Products and Service