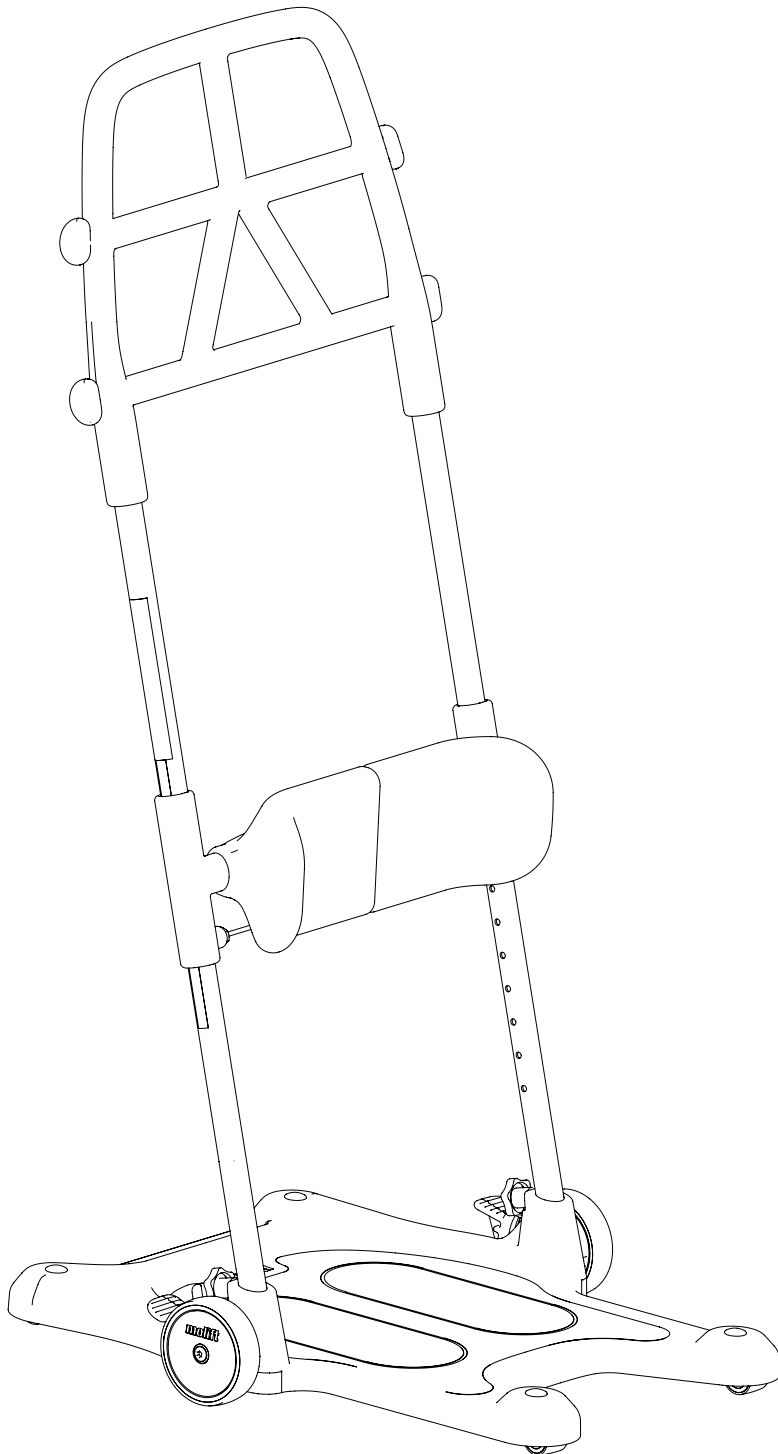


easyCare
systems

Molift Raiser Pro

molift[®]
by Etac



www.easycare systems.co.uk

Contents

User manual - English - 4

General

CE declaration

The product, and its related accessories, described in this instruction for use (IFU), is in compliance with the regulation (EU) 2017/745 of 5. April 2017 – as a medical device, risk class I.

The product is manufactured and tested according to EN 12182:2012 and selected parts of EN/ISO 10535:2006.

Any serious incident that occurs in relation to the device should be reported to the manufacturer and the competent authority of the Member State in which the user and/or patient is established.



Conditions for Use:

Transferring a person may pose an element of risk. Only trained personnel should use the equipment covered by this user manual.

Warranty notice:

Two-year warranty against defects in workmanship and materials of our products. Please refer to www.etac.com for terms and conditions.

Visit www.etac.com to download the latest version of our documentation.

Important

Read User Manual before use!

It is important to fully understand the content of the user manual before attempting to use the equipment. This User Manual contains important safety instructions and information regarding the use of the Molift Raiser Pro. For instructions/information regarding the accessories, see separate user manual.

In this manual the user is the person being transferred.

The assistant is the person operating the Molift Raiser Pro.

Modifications and use of components made by other manufacturers:

We recommend only using Etac components and spare parts. Declaration of conformity is not valid and Etac is not responsible for warranty if any modifications are made to the Product. Etac shall not be liable for faults or accidents that can occur when using components made by other manufacturers.

Risk assessment

It is important that the Molift Raiser Pro has been tested with the individual user and for the intended transfer. Assess the risks and take notes. Evaluate the user's ability to use the Product and if needed use any suitable Molift Raiser Pro accessories. You as a carer are responsible for the safety of the user.



Only technical personnel are allowed to perform repairs.

Molift Raiser Pro - intended use

Molift Raiser Pro is a sit-to-stand transfer aid used indoors on flat surfaces for shorter transfer from one sitting position to another sitting position. Transfer between wheelchair and bed/toilet or chair. Can also be used for repositioning farther back in the wheelchair. Users must be active, able to grip and pull up their own body weight. Raiser Pro is designed for easy maneuvering and works well in confined spaces.

Labels and symbols

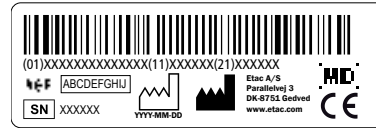
Product label:

The label contains art. number and serial number (bar codes). The EAN code contains;

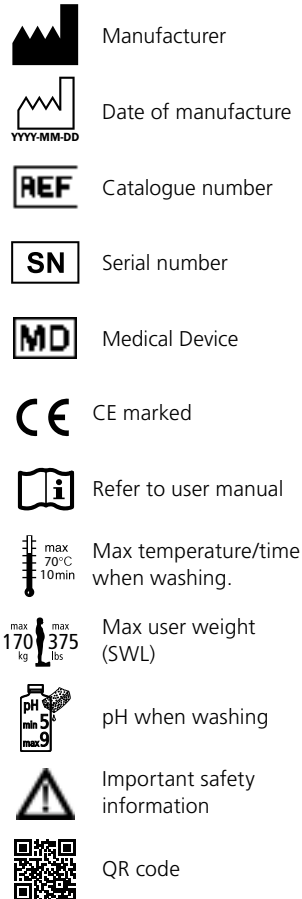
(01) (EAN no.): xxxxxxxxxxxxxx

(11) (Batch): YYMMDD

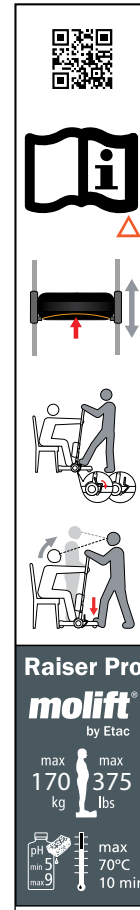
(21) (Serial number): xxxxx



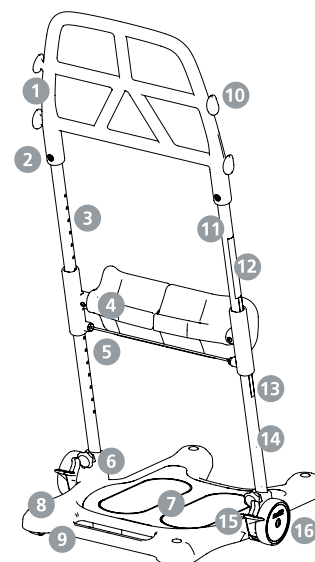
Symbols:



Short user guide:



Molift Raiser Pro



1. Handle
2. Screw
3. Left Pipe
4. Leg support
5. Release wire
6. Knob
7. Foot plate
8. Base plate
9. Castors Ø35
10. Attachment for accessories (2 heights)
11. Right Pipe
12. Short user guide
13. Height label
14. Product label
15. Brake pedal
16. Wheel Ø100

Technical data

Safe Working Load (SWL):

170kg (375 lbs)

Weight of unit:

10kg

Dimensions:

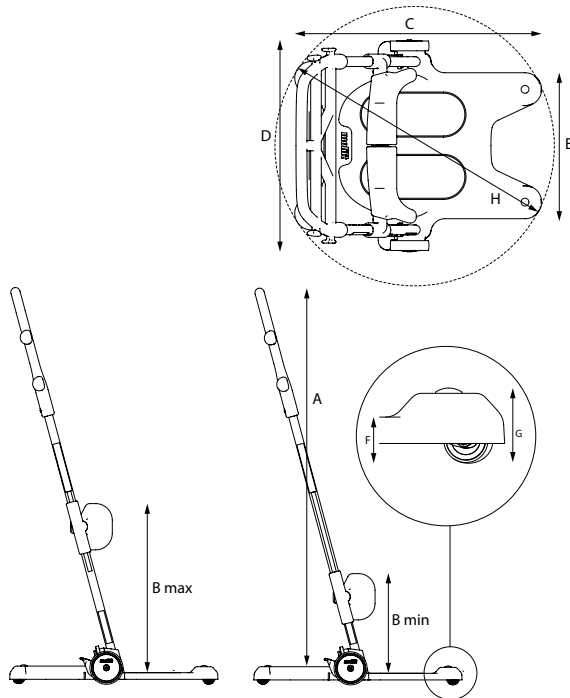
Height(A): 1,2 m
 Height (B): 0,3-0,51 m
 Depth (C): 0,63 m
 Width (D): 0,54 m
 Width (E): 0,37m
 Step in height (F): 0,035m
 Clearance (G): 0,057m

Material:

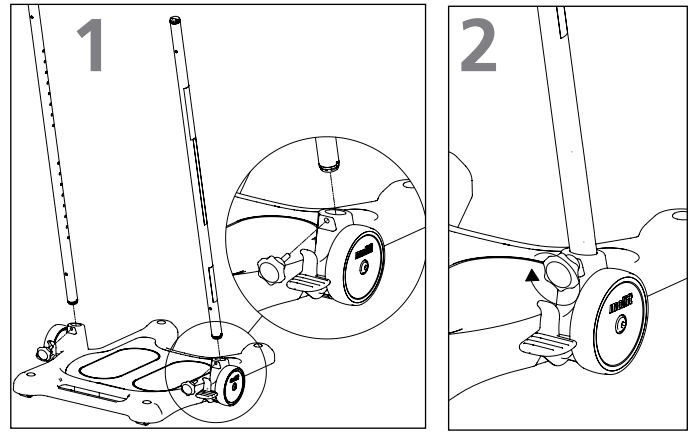
Powder coated aluminum,
 Plastic, Steel.

Expected Lifetime:

The Molift Raiser Pro has an expected lifetime of 5 years or 15000 transport cycles.



Mounting pipes to base plate



1. Place the base plate on an even surface and lock brakes. Insert pipe with holes facing towards center of plate. Pipe with label must be at the right, standing on the assistant side. Insert knob.

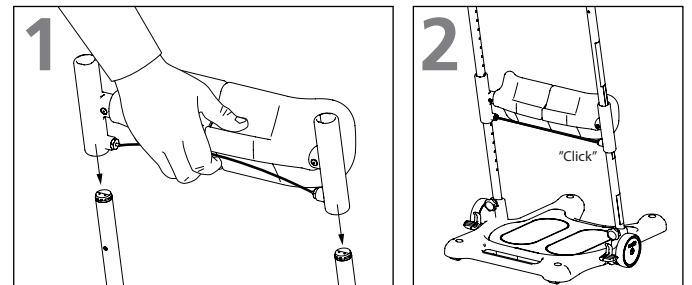
2. Tighten knob firmly by turning knob clockwise.



Make sure that knob are Properly fastened. Loose knobs can make the pipes wobbly and the Molift Raiser Pro unsafe to use.

Mounting leg support

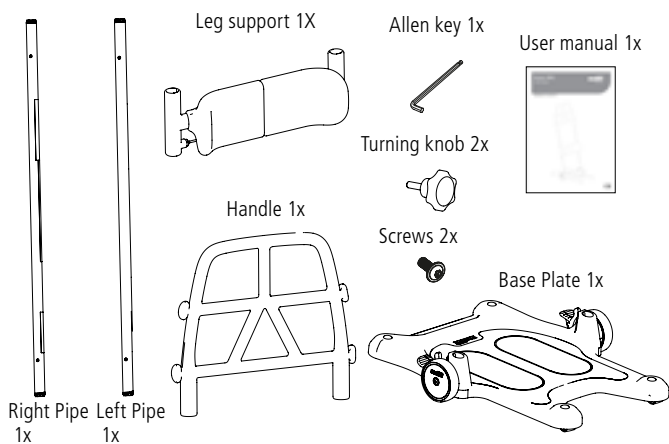
The knee cushions are adjusted individually. The leg support has 7 step adjustment from 0,3 to 0,51 meters. Follow these two steps when mounting the leg support:



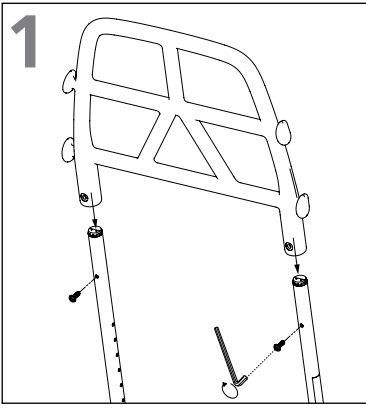
1. Pull release wire and slide the leg support on pipes, cushion facing user side.

2. Release wire and let the leg support settle in desired position.

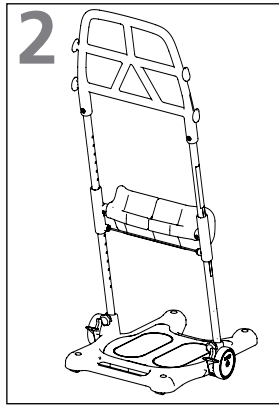
Supplied parts



Mounting handle



1. Slide the handle on pipe so holes on pipe matching holes on handle. Insert unbraco screws and tighten with allen key.



2. Make sure unbraco screws are pointing towards assistant side.



Make sure both sides are properly settled. Push up or down until you get the auditive feedback click. Unattached leg support can cause knee support to slide down and make the Molift Raiser Pro unsafe to use.

Checklist after assembly

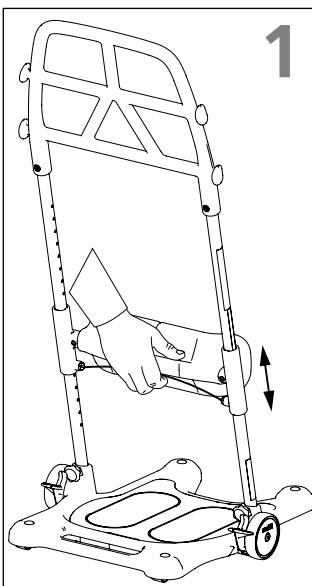


Don't start using Molift Raiser Pro before completing the checklist after assembly.

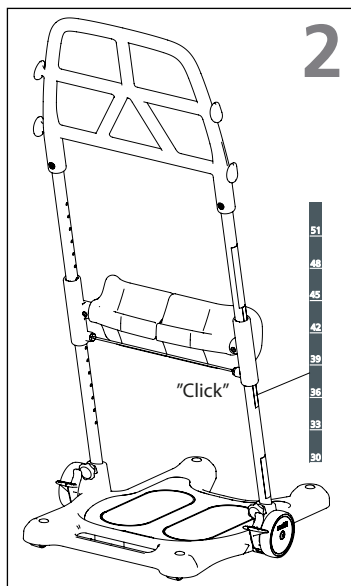
Use this checklist to verify that the Molift Raiser Pro is Properly installed and can operate correctly and safely before use. See assembly information on the previous page for details.

- Make sure that the leg support is mounted correctly.
- Make sure that both knobs between outer pipes and base plate are mounted correctly and Properly tightened
- Make sure that the handle is mounted correctly.
- Make sure Molift Raiser Pro moves freely.
- Make sure brake works.

Adjusting leg support height

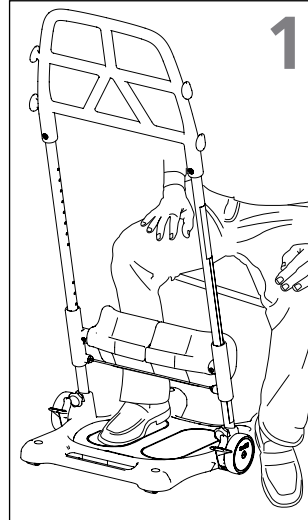


1. Pull wire on the back side of cushions. Move leg support up or down to desired height.

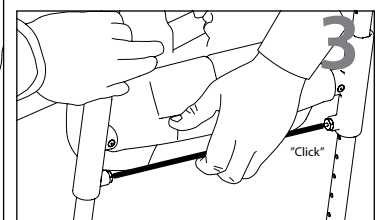
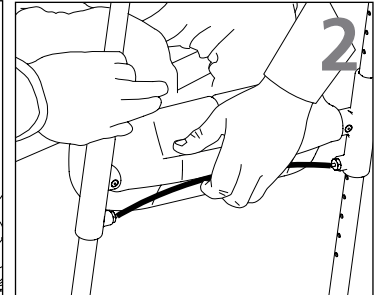


will hear the leg support "click" in place and the red wire is straight. The knee support height can be read from the scale on the pipe. The number above the leg support bracket refers to the correct height.

Positioning Molift Raiser Pro

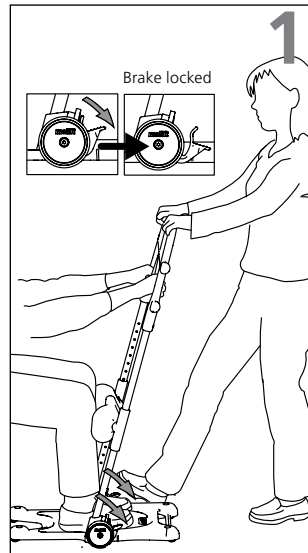


1. The user's feet are placed on the footplate.

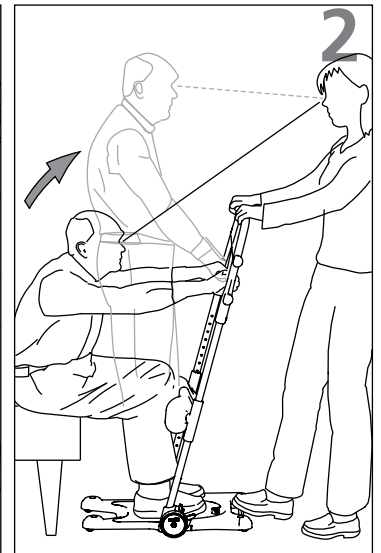


2. Adjust the height of the leg support so that the top of the support is below the knee of the user.
3. When desired height is reached the leg support "click" in place.

Transferring user



1. Lock both wheels by pressing down the brake on one side. Both wheels lock regardless of which side assistant steps on. Place one foot on the edge of the base plate. Choose a grip on the handle that is comfortable for both assistant and the user.



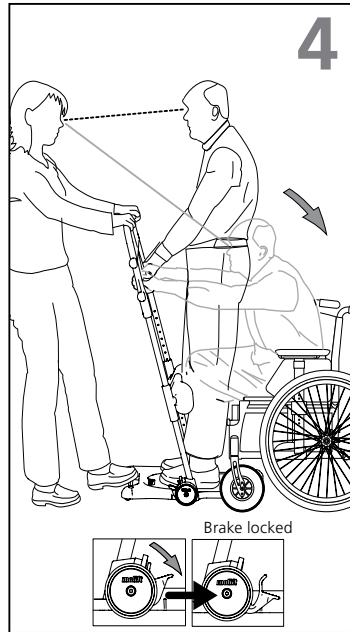
2. Encourage the user to stand up, at the same time, counterbalancing the users weight using a foot and hands (use your body-weight by leaning backwards).



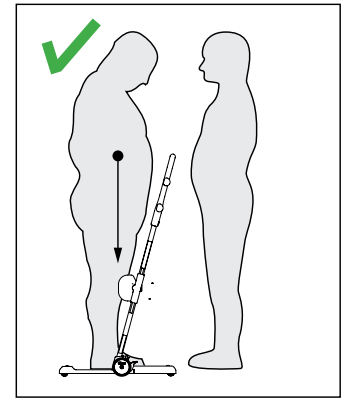
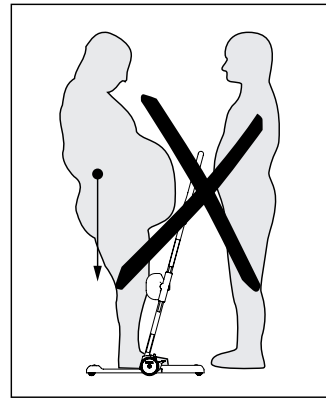
The wheels must always be locked when the user stands up and sits down.



3. Release the brake with one foot. Pull the Molift Raiser backwards and then steer it toward the new seating position. Make sure that any wheels are locked in the new seating. The transfer is best done with the user faced in the direction of travel.



4. Lock both wheels. Place a foot on the edge of the foot-plate before the user sits down. Counter balance while the user sits down. Maintain eye contact with the user during the entire transfer Process.



Make sure the users weight is close to the center of the base plate.

Accessories



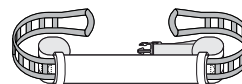
Molift Raiser Soft Handels



Molift Raiser Strap



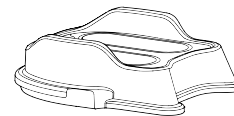
Molift Raiser Strap +



Molift Raiser Belt



Molift Raiser Pro Heel Strap



Molift Raiser Pro Block

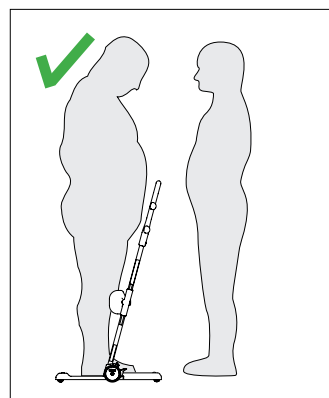
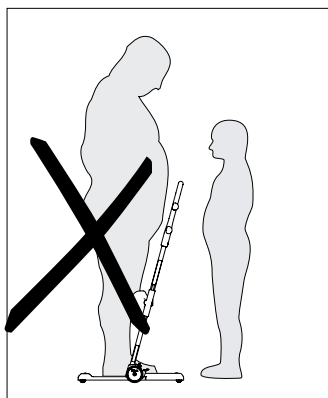


The carer must always counter balance the weight of the user when she/he stands up or sits down.

Transport and storage

Molift Raiser Pro can be stored and transported under temperatures between -25 - 70°C and relative humidity between 15 - 93%. Don't use the Molift Raiser Pro for transportation of goods.

User / Assistant



The assistant has to be able to handle the weight of the user.

Cleaning and disinfection

Clean on a regular basis. Clean surfaces with a damp cloth using an appropriate pH-neutral detergent. Do not use solvents or strong liquids, this may damage surfaces on the Molift Raiser Pro. For disinfection when needed; use isoPropyl alcohol or similar. Avoid abrasive cleaning Products. Remove hair and pile from the wheels, verify that the wheels rotates freely and brakes functions Properly. Make sure not to damage or remove labels when cleaning.

Reconditioning

Follow cleaning and assembly Procedure. Separate reconditioning document is available at Etac.com.

Recycling

Molift Raiser Pro can be disposed of as metal and plastic waste. Recycling instructions is available at Etac.com

Spare parts

A list of spare parts is available at Etac.com.



Special Products and Service

Contact Us

Units 5 and 6 Lower Vicarage Road Southampton

Hampshire

SO19 7RJ

T: 02380 420678

E: info@easycare systems.co.uk

www.easycare systems.co.uk