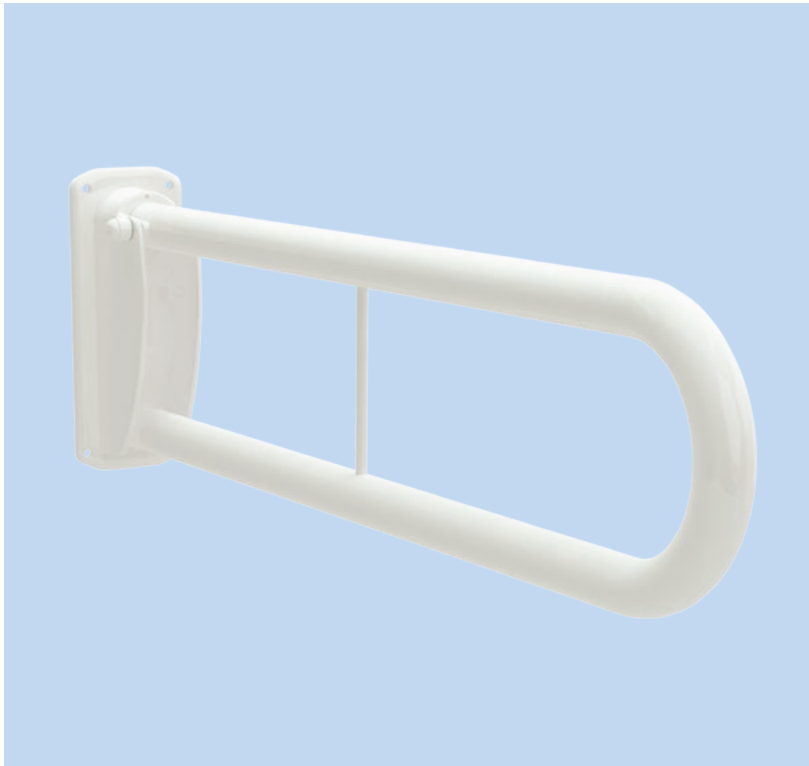


Mild Steel and Stainless Steel

Double Arm Hinged Support Rails

35



Mild Steel Stainless Steel

- Stainless Steel for use in wet or damp areas. Mild Steel for use in dry areas.
- 35mm tubular construction for superior strength and confidence.
- Hinged rails are tested to 170kg in vertical and 45 degree positions.
- Die-cast Aluminium Backplate for strength and rigidity.
- Available in polyester coated finishes. Please specify the RAL colour you require when ordering colours.
- Backplate bolt holes are drilled for M8 Bolts. (Fixings not supplied)

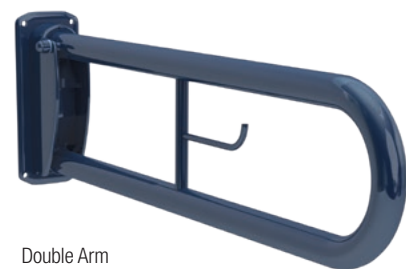
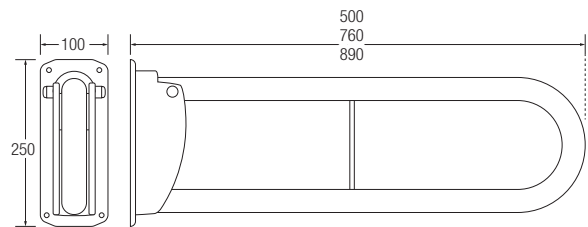


Ribbed Grip

Double Arm Hinged Rails can be manufactured with a ribbed grip. **Please add an 'R' to the end of the product code.** Please note ribbed grips are not recommended for wet environments.

Double Arm Hinged Support Rail

		○ White		● Blue RAL 5011		● RAL Colour	
35mm	MS	500mm	33850	On Req.	On Req.		
35mm	MS	760mm	33800	33801	33804		
35mm	MS	890mm	33860	33861	33862		
35mm	SS	500mm	35020	On Req.	On Req.		
35mm	SS	760mm	35000	35025	35030		
35mm	SS	890mm	35036	35037	35035		



Double Arm Hinged Support Rail with Toilet Roll Holder



Drop Down Leg

Hinged Rails with drop down legs are available as part of our Professional range.

Turn to page 39

+ with Toilet Roll Holder

		○ White		● Blue RAL 5011		● RAL Colour	
35mm	MS	500mm	34750	On Req.	On Req.		
35mm	MS	760mm	34700	34760	34765		
35mm	MS	890mm	33864	33865	33863		
35mm	SS	500mm	35220	On Req.	On Req.		
35mm	SS	760mm	35200	35225	35230		
35mm	SS	890mm	35090	35091	35089		