

SUREFOOT™

Bath/Shower Board

How to assemble, fit and general maintenance

easyCare
systems



The **Helping Hand**
Company

www.easycare systems.co.uk



How to Assemble



On the underside of the bath/shower board are two discs, these are the attachment points for the feet



There are two identical feet. Each foot is secured in place by sliding on to the disc



Each foot will only slide on one way. When in place you will hear and feel them engage. Repeat for both feet

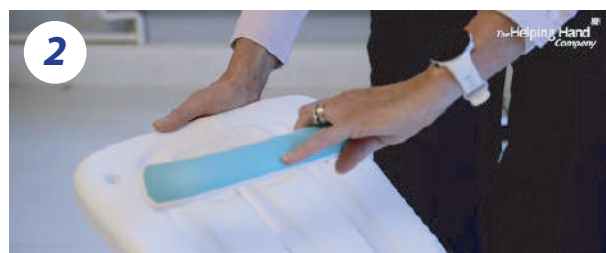


Turn the bath/shower board the right way up and you are now ready to fit on to the bath

How to Attach the Bath/Shower Board Handle



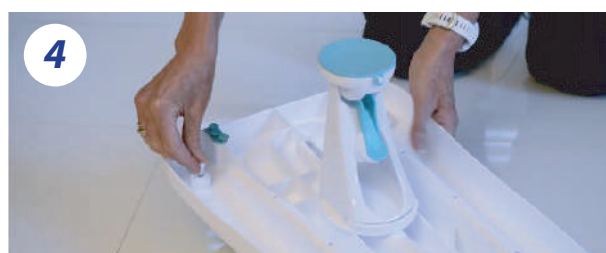
The optional bath/shower board handle comes with three parts – a handle and two fixing plugs



Before fitting, make sure the handle inclines inwards along the board. This ensures there is space for you to hold onto the handle



Right side up, slot the handle in. The handle will only fit at one end of the board (same end as soap dish)



Turn over the board and tap the plugs in to each hole where the handle came through. No tools are required. The handle is now fitted

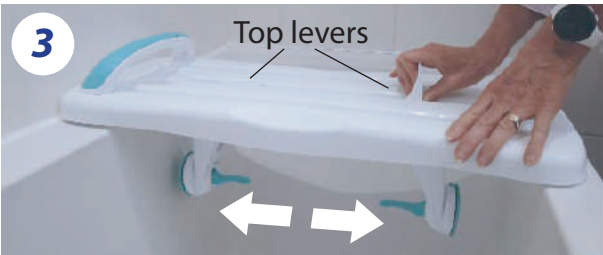
How to Fit



Place the board over the top of the bath, opposite end to the taps. Make sure the soap dish (and handle, if supplied) are closest to the wall. Push down firmly so the suckers grip the bath rim



Before going any further, do a visual check that the internal bath width does not exceed the safety guide mark on both ends of the board before continuing



Release the top lever of one foot. With your other hand - from underneath - slide foot over to make contact with side of the bath



Ensuring each sucker foot is firm against the bath wall, lock in place by pulling down the aqua coloured lever underneath, then lock the top lever. Repeat with the other foot. The board is now ready to use



Max. Safe User Weight 200kg (31 stone)

CHECK, EVERY TIME BEFORE USE, THE BOARD IS FIRMLY IN PLACE

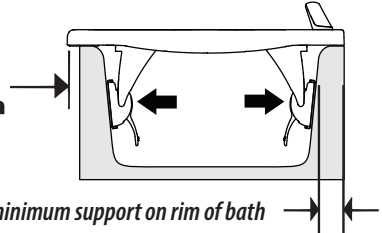
It is not recommended that the bath board be fitted where there is an overlap of more than 25mm



For safety reasons never sit on the edge of the bath board if it overlaps the bath

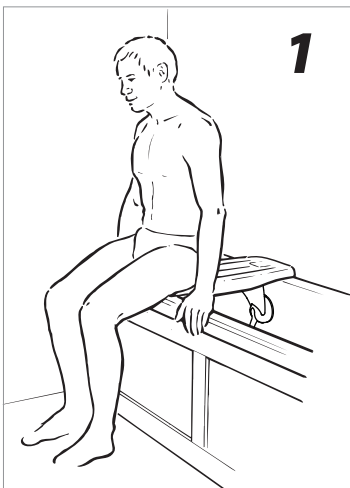
**25mm
Max**

30mm minimum support on rim of bath

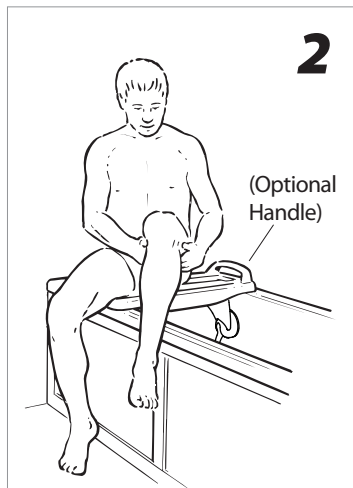


The bath/shower board will not fit a corner bath

Please take care getting in and out of the bath



Sit on the end of the board with your hands either side



Lift each leg - one at a time - into the bath



Then slide across to the middle of the board

Taking care of the **SUREFOOT™ Bath Board**

- 1 a) We recommend to keep clean **between uses**, using non-abrasive disinfectant suitable for plastic baths, not forgetting the feet
b) **Before re-issue**, clean and disinfect product using standard detergents and disinfectant wipes
Also compatible for automatic cleaning, using fluid with pH 5-8, up to 105°C for 10 minutes
- 2 Always inspect the board for wear and tear and **secure fitting before each use**
- 3 Three year warranty, spare parts available

This device is intended to be used by the following patient groups:

- **Elderly or less mobile**
 - No longer able to safely climb in/out of bath
 - Reduced mobility or reduced strength to transfer safely
 - Ability to sit unsupported/unaided
- **Not suitable for**
 - Users unable to sit without support
 - Children

Disposal/End of use

Product is 100% recyclable

- Community equipment premises - product must be cleaned and disinfected prior to disposal within the local facilities waste management guidelines
- Home use - product should be cleaned and disinfected prior to disposal in domestic waste

Storage

- DO NOT store in sunlight
- Operating temperature +10°C / +40°C
- Storage temperatures -10°C / +40°C



For more information:

Units 5 and 6 Lower Vicarage Road
Southampton
Hampshire
SO19 7RJ
T: 02380 420678
E: info@easycare systems.co.uk W:
www.easycare systems.co.uk

