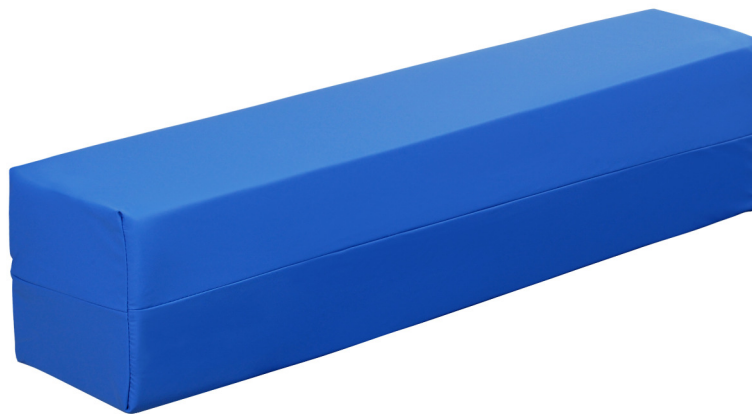


STATIC MATTRESS LENGTH EXTENSION INFILL

Special Products and Service



**Product Code
and Dimensions:**

HFIM1515: 900 x 150 x 150mm
HFIM2013: 900 x 200 x 130mm
HFIM2016: 900 x 200 x 160mm
HFIM2020: 900 x 200 x 200mm
HFIM2016.12: 1200 x 200 x 160mm
HFIM2016.14: 1400 x 200 x 160mm

Description:

- Foam inserts extend the mattress by 200mm
- Supplied with a vapour permeable waterproof cover
- Used in conjunction with the bed extensions

Warranty:

In terms of Harvest Healthcare Guarantee and Warranties the Static Mattress Length Extension Infill is guaranteed for one year from date of purchase.

Exclusions:

1. Removable covers are guaranteed for one year
2. Damage to fabric covers through incorrect use and penetration by sharp instruments is excluded

Easy Care Systems Ltd

Contact Us

Units 5 and 6 Lower Vicarage Road
Southampton, Hampshire, SO19 7RJ
T: 02380 420678
E: info@easycare systems.co.uk
www.easycare systems.co.uk